

Embrace solar freedom with Tigo TS4 Flex MLPE

Image courtesy:
GEM Energy Australia

Tigo's industry leading TS4 platform of Flex MLPE (Module Level Power Electronics) connects to your PV modules to unlock multiple benefits for your PV system, including:

- **Increased output** - with module level optimization
- **Lower maintenance costs** - with module level visibility
- **Enhanced safety** - with module level rapid shutdown

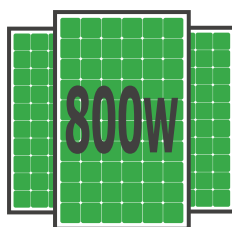
Sites require just a few main components to unlock the benefits of optimization, advanced module-level monitoring, and enhanced safety. Each TS4 can be attached to a PV module in a matter of seconds.

Tigo TS4 is the only platform that lets you choose the equipment and features that maximize the benefit for your installation. Solutions can be applied to existing PV installations or new ones at virtually any scale.



Flexible

Choose the right feature set - including optimization, module-level monitoring, and rapid shutdown. Open ecosystem, so Tigo TS4 work with most (if not all) available inverters.



Simple

TS4's work on residential, commercial, and utility-scale projects - and are rated for the latest high-wattage modules, up to 800W.



WARRANTY

Trusted

From the North to the South Pole, Tigo installations range from <10 kW to >10 MW in size. Over 2 GWh daily monitored production providing Energy Intelligence with advanced data analytics.

Contact us

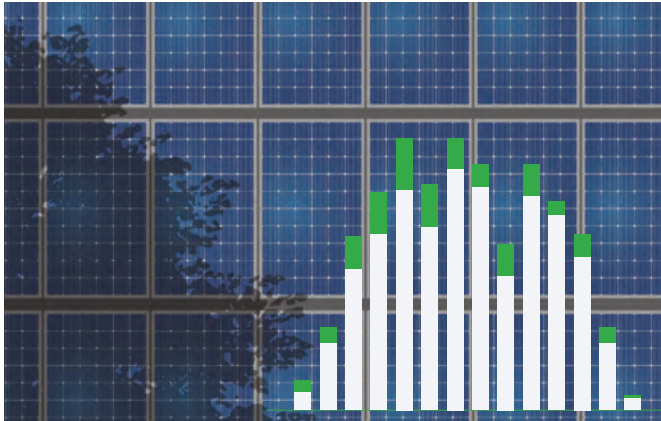
<https://www.tigoenergy.com/contacts>

©20251112 Tigo Energy, Inc. 002-00241-00 Rev 1.0

Tigo®

Increase production, visibility, safety

Whether you need to meet safety code, want module level visibility or to reduce the impacts from shading, Tigo has you covered. With Tigo TS4, you can mix and match the features listed below.



OPTIMIZATION

Increase energy output



Let's face it - shade happens. Trees, dust, module-degradation and more can all impact the performance of a string of PV modules. Tigo optimizers minimize the impact of mismatch across modules to maximize energy output for any site.

On average, sites with Tigo optimizers yield 6.6% Reclaimed Energy, or increase in energy production, which is shown in bar charts in the EI Portal.



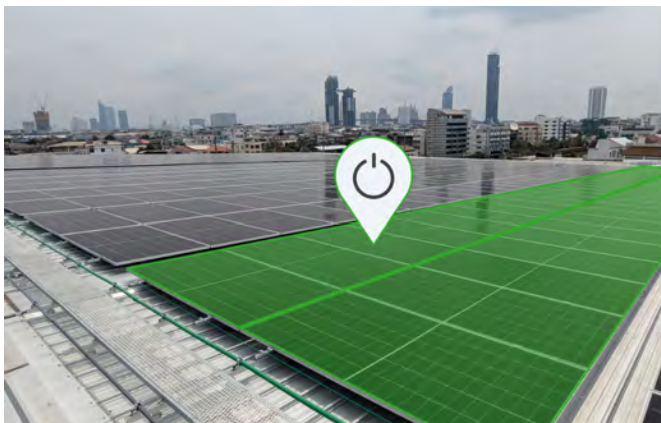
MONITORING

Lower operating expenses



Tigo TS4 enable granular, module level monitoring with its Energy Intelligence Platform. View power, energy, volts, amps, and more at the module level for any period of time.

Module-level data helps installers and O&M providers rapidly identify and diagnose issues remotely - avoiding costly truck rolls and minimizing technician time on site.



RAPID SHUTDOWN

Enhance safety



Tigo TS4 reduce voltage at the module-level upon rapid shutdown initiation or loss of power. This feature meets US NEC Rapid shutdown compliance and similar safety codes enacted in other regions.

Module-level rapid shutdown is ultimately for the safety of first responders. In contrast to a string-level shutdown, module level rapid shutdown with Tigo reduces voltage to safe levels along the conductors that lead to the inverter.

Contact us

<https://www.tigoenergy.com/contacts>

©20251112 Tigo Energy, Inc. 002-00241-00 Rev 1.0

Tigo®

Tigo TS4 Flex MLPE

Multiple features and wattage ratings available to maximize the benefits of your PV installation.

FEATURES

OPTIONS

TS4-A

TS4-X

ENHANCEMENTS



Optimization
Monitoring
Rapid shutdown
700W (IEC), 725W (UL)
800W (IEC & UL)
Selective deployment
Multi-Factor Rapid Shutdown*



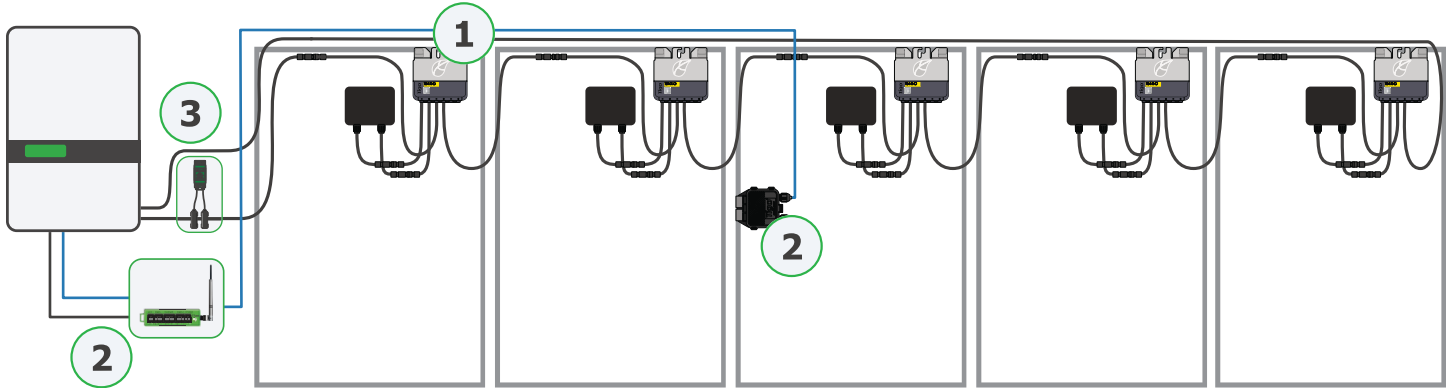
-
Monitoring
Rapid shutdown
700W (IEC), 725W (UL)
800W (IEC & UL)
Selective deployment
Multi-Factor Rapid shutdown*



-
-
Rapid shutdown
700W (IEC), 725W (UL)
800W (IEC & UL)
Upgradeable to TS4-S*
(for a fee)

*only available for TS4-A (725W) and TS4-X (800W)

SIMPLIFIED SCHEMATIC



1. TS4 Flex MLPE

Tigo TS4 units are clip onto the module frame in seconds and connect to each junction box to provide the module-level features and benefits described above.

2. TAP & CCA

Tigo's Cloud Connect Advanced (CCA) is the data hub for TS4s and other devices (inverter, battery, etc.). It connects with a communication cable to the Tigo Access Point (TAP) which wirelessly communicates with **TS4-O** and **TS4-S** units.

3. RSS Transmitter

The Tigo Rapid Shutdown System (RSS) Transmitter enables rapid shutdown via Powerline Communication (PLC) with **TS4-F** units to meet required safety codes.

Enhancement: MFRS

Tigo 725W and 800W TS4's can use wireless (CCA & TAP) and PLC (RSS Transmitter) rapid shutdown options to enable Multi-Factor Rapid Shutdown (MFRS). Similar to 2FA (2 factor authentication) in security, MFRS provides an additional layer of protection and reliability for rapid shutdown systems.

Contact us

<https://www.tigoenergy.com/contacts>

©20251112 Tigo Energy, Inc. 002-00241-00 Rev 1.0

Tigo®



Princess Elisabeth Station
Antarctica

Installs in seconds, lasts decades - even in harsh environments



10 seconds per module

Each TS4 connects to the PV module at the junction box and clips to the module frame. Plug and play with your PV system.



No ground wire required

Tigo TS4 do not need a separate ground wire or mounting bolts for installations.



Water and corrosion resistant

Polycarbonate cover is water-resistant to 1.5m deep - proven in the harshest environments from Antarctica to the Atacama desert.

About Tigo

Founded in 2007, Tigo is a worldwide leader in the development and manufacture of smart hardware and software solutions that enhance safety, increase energy yield, and lower operating costs of residential, commercial, and utility-scale solar systems. Tigo combines its Flex MLPE (Module Level Power Electronics) and solar optimizer technology with intelligent, cloud-based software capabilities for advanced energy monitoring and control.

Tigo MLPE products maximize performance, enable real-time energy monitoring, and provide code-required rapid shutdown at the module level. The Company also develops and manufactures products such as inverters and battery storage systems for the residential solar-plus-storage market.

Additional Information



TS4-A



TS4-X

Contact us

<https://www.tigoenergy.com/contacts>

©20251112 Tigo Energy, Inc. 002-00241-00 Rev 1.0

Tigo®