

SNAPNRACK ULTRA RAIL STANDARD STANDOFF ON METAL ROOF BASE (MRB) FOR MOUNTING TO METAL ROOFS

REFER TO SNAPNRACK ENGINEERING CHARTS FOR APPLICABLE RAIL SPANS. "BIN" NUMBER ON CHART SHOULD MATCH "BIN" NUMBER ON THIS DRAWING

MIN. 3 FULL THREADS PROJECTING THROUGH PURLIN WHEN FASTENING WITH 1/4"Ø TEK SCREW OR EQUIVALENT. USE TEK SCREW MANUFACTURER'S TORQUE SPECIFICATION

REFER TO SNAPNRACK INSTALLATION MANUAL FOR 5/16"Ø HARDWARE TORQUE SPECIFICATIONS

RAILS CAN MOUNT UPSLOPE OR DOWNSLOPE OF THE STANDOFF SHAFT

FOR LEVELING DETAILS, REFER TO SNAPNRACK DETAIL DRAWING "SNR-DC-00334 ULTRA RAIL, COMPONENT DETAIL, LEVELING SPACER ON STANDOFF"

INSTALLATION STEPS:

STEP 1:

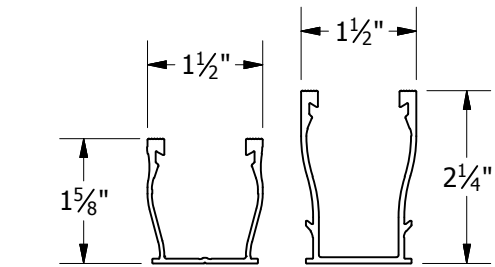
ATTACH METAL ROOF BASE TO PURLIN WITH 1/4"Ø TEK OR EQUIVALENT SELF DRILLING SCREW. TORQUE TO MANUFACTURER SPECIFICATIONS

STEP 2:

THREAD METAL ROOF BASE CAP ONTO METAL ROOF BASE BOTTOM. TAKE CARE TO ENSURE THE BASE DOES NOT TWIST WHEN CAP IS TIGHTENED. ENSURE CAP IS FULLY SEATED TO BASE.

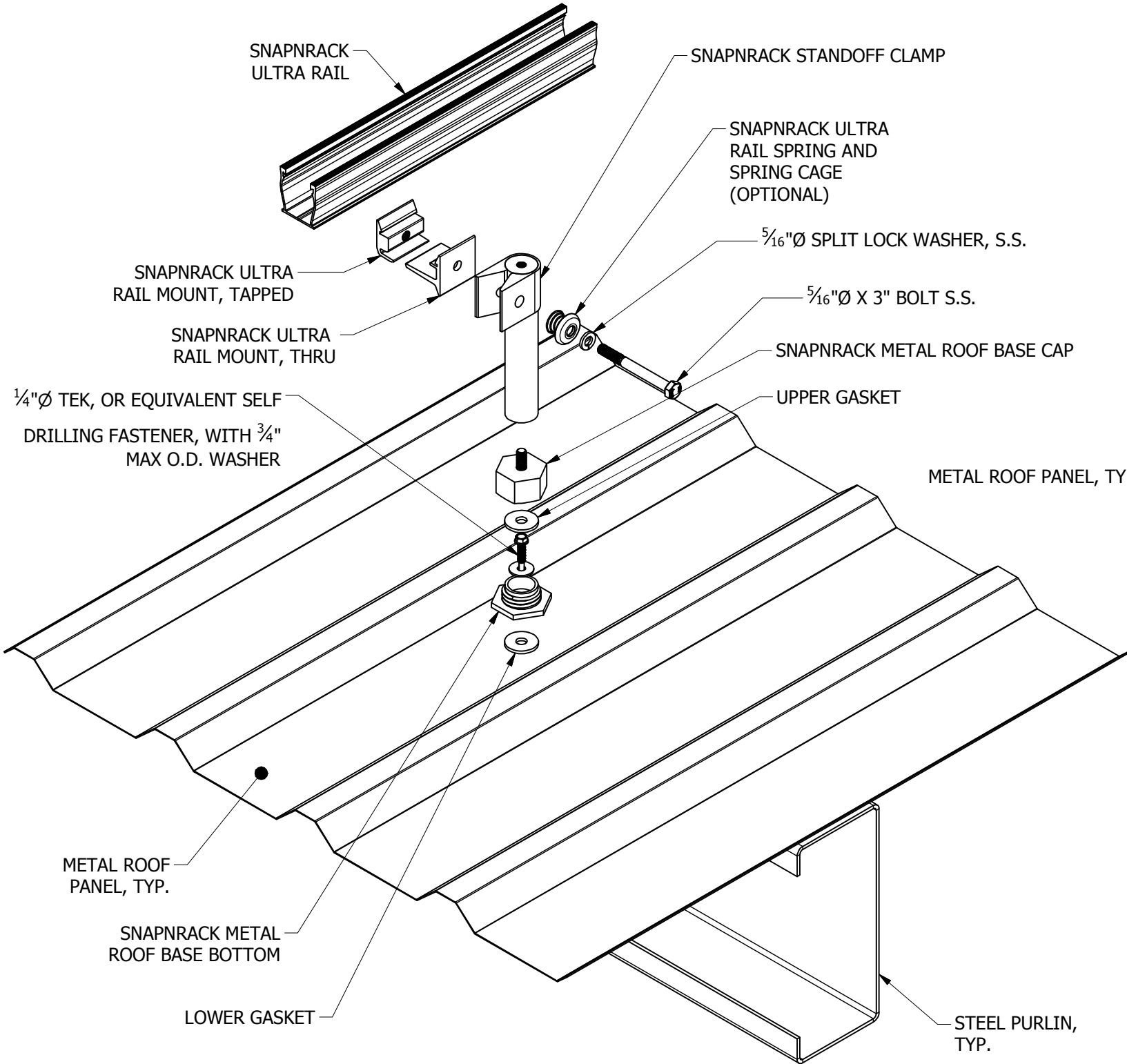
STEP 3:

ATTACH STANDOFF TO STUD IN METAL ROOF BASE CAP.



UR-40 RAIL | UR-60 RAIL

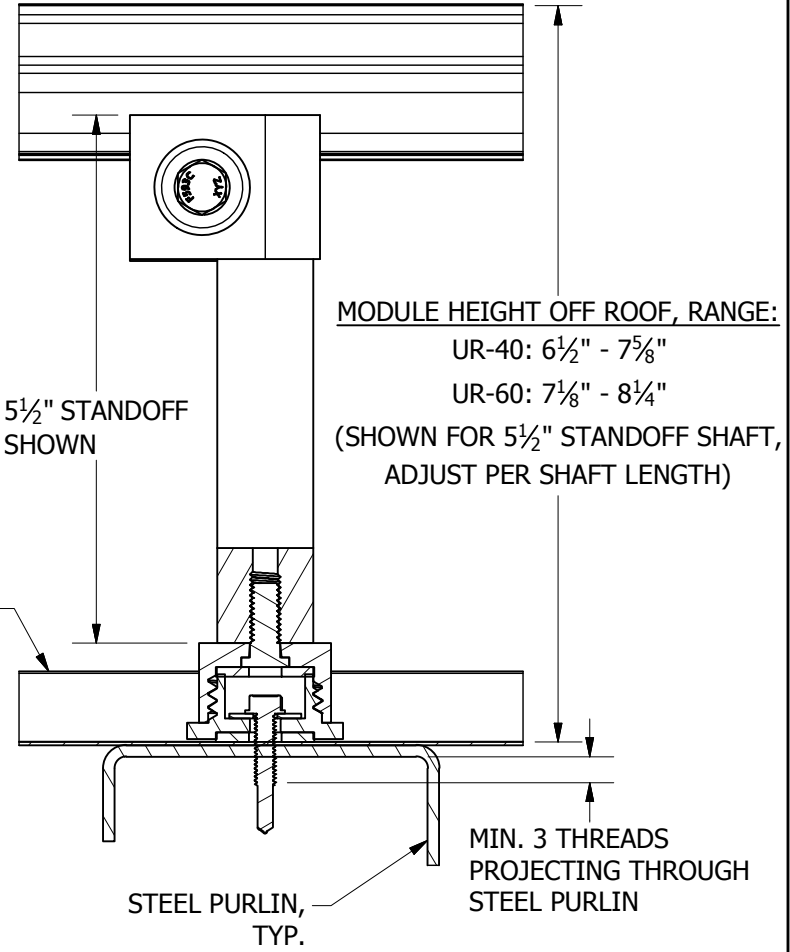
FOR USE WITH SNAPNRACK ULTRA SERIES RAILS



ULTRA RAIL METAL ROOF BASE, EXPLODED

BIN:  
5

REVISION:			
1	5/7/2019	NEW DETAIL	MJA



MODULE HEIGHT OFF ROOF, RANGE:  
UR-40: 6 1/2" - 7 5/8"  
UR-60: 7 1/8" - 8 1/4"  
(SHOWN FOR 5 1/2" STANDOFF SHAFT, ADJUST PER SHAFT LENGTH)

PENETRATION DETAIL



Sunrun South LLC  
595 MARKET STREET, 29TH FLOOR • SAN FRANCISCO, CA 94105 USA  
PHONE (415) 580-6900 • FAX (415) 580-6902  
THE INFORMATION IN THIS DRAWING IS CONFIDENTIAL AND PROPRIETARY. ANY REPRODUCTION, DISCLOSURE, OR USE THEREOF IS PROHIBITED WITHOUT THE WRITTEN CONSENT OF SUNRUN SOUTH LLC.

DESIGNER: G.MCPHEETERS  
DRAFTER: M.AFFENTRANGER  
APPROVED BY: B.PETERSON

SCALE: DNS  
DATE: 5/7/2019

DRAWING NUMBER:  
SNR-DC-00353

DESCRIPTION: ULTRA RAIL, ATTACHMENT DETAIL, METAL ROOF BASE WITH STANDOFF TO PURLIN

REV: 1