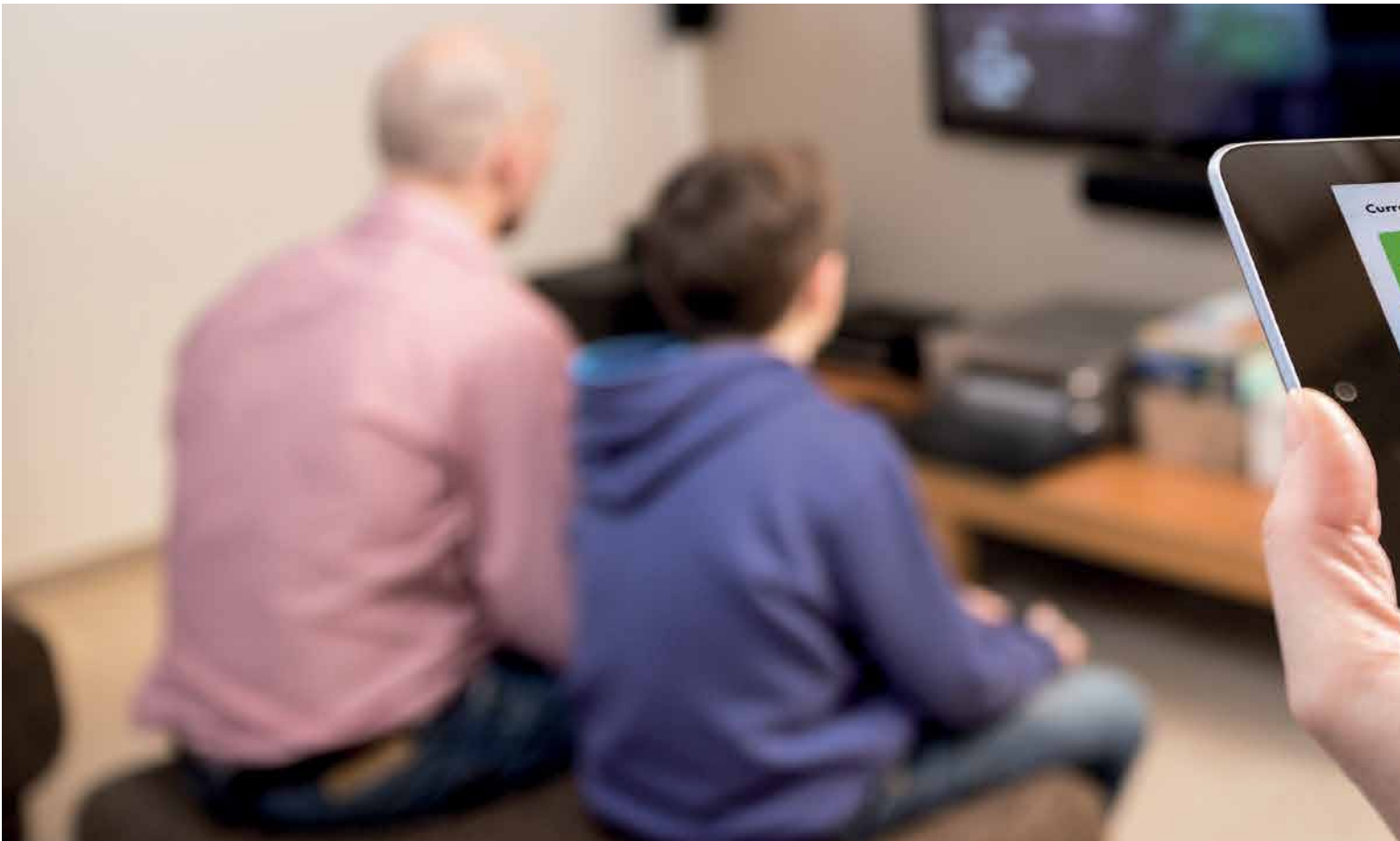


WHAT MAKES THE SMA POWER+ SOLUTION RIGHT FOR YOU?



SMA Power+ Solution



THE SOLAR DECISION MADE SIMPLE WITH POWER+

Selecting the right solar technology can feel overwhelming, but it doesn't have to be. Here are five simple reasons the SMA Power+ Solution is the superior choice for your solar investment.

#1

1. Proven Experience

The solar inverter market is full of new entrants and start-ups, and many companies' claims are based on theoretical performance. SMA is the only solar inverter manufacturer with devices in operation exceeding the length of a standard warranty. Despite offering long-term guarantees, other brands simply haven't been around long enough to support their claims. This experience means that SMA solutions are engineered for high performance and reliability, and are based on field-proven results.



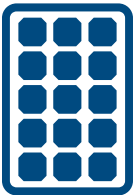
2. Reliability

The Power+ Solution provides more power with fewer components. Module-level technologies must endure harsh rooftop environments. SMA's Power+ Solution safeguards the most sensitive electronics with OptiCool® active temperature management inside the inverter, which is usually located in a protected area. The module-based DC technology also uses half the components of other brands, meaning there are far fewer parts that can fail during operation. This makes the SMA solution safer and more reliable to power your home.



3. More Power

In head-to-head testing, SMA's Power+ Solution produced more power than the competition. Power+ optimizers can be used to increase array power under shaded conditions or to take advantage of otherwise unusable roof space. This additional power translates to greater savings on power bills!



4. Free, Panel-Level Monitoring

Homeowners can enjoy total security with free, module-level monitoring via Sunny Portal - the world's largest PV monitoring platform, which is easy to use and mobile-friendly. Even small discrepancies in power production can be seen and quickly rectified. This means that system owners will save more each month, and ensures the highest return-on-investment possible.

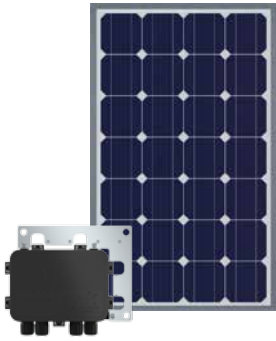


5. Future-Proof

The Power+ Solution is one part of an energy ecosystem. SMA has more than 20 years of experience in designing storage-based systems, and has partnerships with leading home energy management and battery providers including Mercedes Benz, Tesla Energy, and LG Chem. As budget allows and more solutions become available, a homeowner can leverage SMA technology for a truly integrated smart home of the future.

THE POWER+ SYSTEM OVERVIEW

Each component in the SMA Power+ Solution works together to turn your home into a savings generator.



Smart Module Technology

Module-based technology boosts performance, especially when shade is present, and enhances safety.

PV inverter

The inverter is the brains of your solar power system. It converts the DC electricity generated by your panels into usable AC power. It also regulates power production and interacts with the grid to keep your system safe and compliant.

Monitoring

Module-level monitoring is available through the Sunny Portal. It ensures there's always a watchful eye safeguarding your investment.

ENERGY
THAT
CHANGES



SOCIAL MEDIA

www.SMA-America.com/Newsroom

