

PACKAGING & SHIPMENT SPECIFICATIONS

Applicable for the following REC solar panels:

REC Alpha Pure Series

REC Alpha Pure-R Series

REC Alpha Pure 2 Series

REC Alpha Pure-RX Series

REC N-Peak 3 Series

REF: PM-PD
REV: JTEC EN 3.2025



CONTENTS

INTRODUCTION	3
REC ALPHA PURE 2 SERIES	4
REC ALPHA PURE-R SERIES	5
REC ALPHA PURE-RX SERIES	6
REC N-PEAK 3 SERIES	7

*Product only available in the USA

+Product not available in the USA

INTRODUCTION

REC believes that the packaging of our products is just as important as the product itself. To ensure our solar panels arrive with our customers in as good condition as possible, REC takes every care to ensure a high quality level of packaging and uses international testing standards to ensure the panels reach their destination in the best condition. Except where specifically stated, the information given on the following pages is relevant to all modules in the product family named and is therefore applicable to all product variants, e.g., different colored frames, backsheets, and/or cell types. The images shown are a generic representation of the instructions regardless of color or exact design.

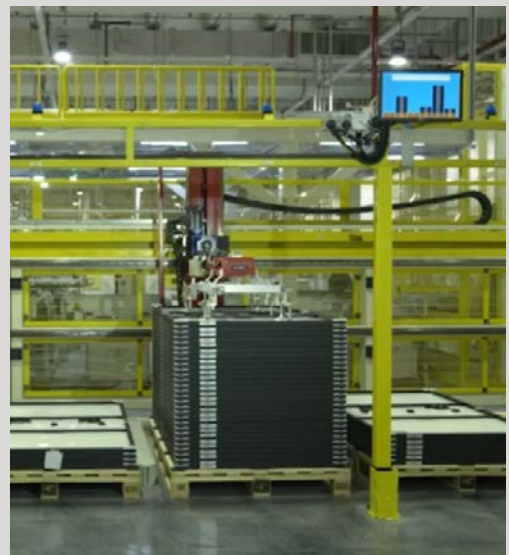


PALLET HANDLING

This document contains instructions concerning the use and handling of pallets of REC solar panels. Following these instructions will ensure that the panels are in the best condition upon arrival at the installation site. Misuse or failure to follow these procedures may lead to damage or injury, and may invalidate the warranty on the product.

QUALITY

REC performs a quality check on all pallets before and during loading. Vehicles will only be loaded if they are deemed safe and serviceable. During transportation, the pallets are stably loaded in protected containers with air bags between them to secure them in position. The freight company and driver are responsible for ensuring suitable load safety for each delivery vehicle. Vehicles without suitable load safety measures will not be loaded. Loading without the use of air bags or loading belts to secure the pallets may lead to damage to the pallet(s) and/or module(s) during transportation which may invalidate the warranty. If using loading belts to secure pallets, ensure these are correctly fitted as over-tightening may cause damage to the modules or pallet(s).

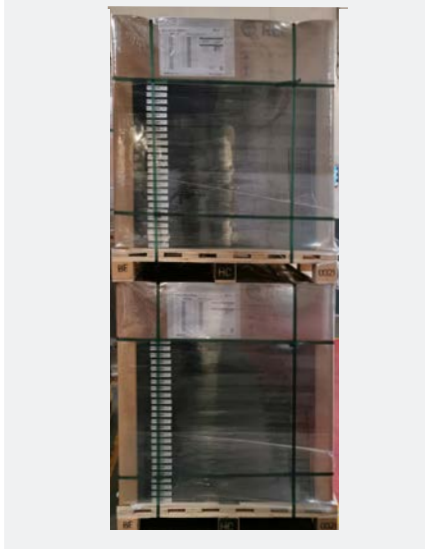


RECYCLING

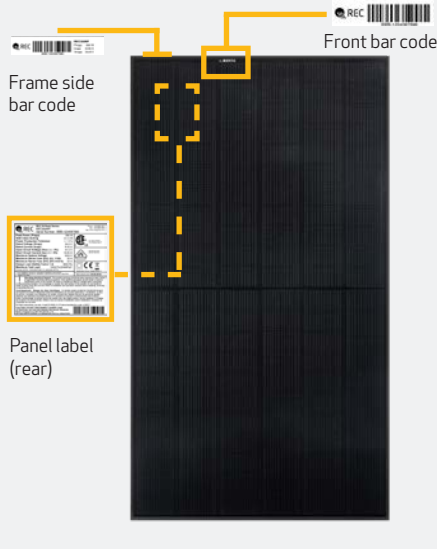
REC makes every effort to ensure the panel packaging is kept to a minimum and that environmentally-friendly materials are used wherever possible. This minimizes waste and discarded items to dispose of at the installation site. The wooden pallets can be re-used or recycled. The paper and cardboard packaging used on REC pallets can be also be widely recycled and the protective wrapping and panel separating blocks are also recyclable in many areas. Please check for all applicable procedures and recycle all packaging and panels according to local guidelines and regulations. REC makes every effort to ensure environmentally-friendly packaging materials are used. Please recycle whenever possible.

REC ALPHA PURE 2 SERIES

PALLET FRONT VIEW (DOUBLE STACKED)



PANEL IDENTIFICATION



PALLET SHIPMENT DIMENSIONS

Length of Pallet:	1910 mm (75.2 in)
Width of Pallet:	1090 mm (42.9 in)
Height of Single Pallet Stack:	1205 mm (47.4 in)
Height of Double Pallet Stack:	2410 mm (94.9 in)
Pallet Weight:	40 kg (88 lbs)
Stack Weight (Pallet + Panels):	753 kg (1,660 lbs)

DELIVERY INFORMATION

Panels per Pallet:	33
Panels per 40 ft GP/high cube container:	792 (24 Pallets)
Panels per 13.6 m truck:	924 (28 Pallets)
Panels per 53 ft truck:	858 (26 Pallets)

DELIVERY DOCUMENTATION

Documentation is located on short side of pallet. Pallet documentation includes:

- Module flash data
- Serial Number
- Product Name
- Watt Class

PALLET SIDE VIEW (DOUBLE STACKED)



PALLET STACKING



PACKAGING MATERIAL

Pallet:	Wood
Foam pad:	Polyurethane Polyether Polyol
Top Cover:	Corrugated Cardboard
Edge Protectors:	0
Corner pieces and spacers:	0

STORAGE AND TRANSPORTATION

Stacking for Storage:	2 max
Stacking for Transportation:	2 max

NOTE: When double stacking pallets, ensure the upper pallet sits securely on the edge protector to avoid damage to the lower pallet during transportation or handling.

NOTE: Pallets delivered stacked are not bound together.

MINIMUM FORK LENGTHS FOR TRANSPORTATION

	SINGLE/DOUBLE STACK ONLY	
FORKLIFT	Long side	1.2 m
	Short side	1.5 m
PALLET JACK	Long side	
	Short side	1.5 m

NOTE: Forks must be spaced a minimum of 500 mm apart

NOTE: Handlers must ensure that vehicles used for REC pallets can handle the specified load safely.

NOTE: Specifications subject to change without notice

PACKAGING DOCUMENTATION

REC 20AA Pure 2

Part: **6000000**

Pallet No: **L1234567_AAAA**

Top

Bottom

No.	Serial Number	Imp(A)	Pmp(W)	No.	Serial Number	Imp(A)	Pmp(W)
1	107040210	9.890	425.7	16	107040210	9.900	425.4
2	107040210	9.900	425.7	17	107040210	9.901	422.8
3	107040210	9.902	425.9	18	107040210	9.929	422.9
4	107040210	9.929	425.2	19	107040210	9.959	425.2
5	107040210	9.962	424.3	20	107040210	9.974	423.8
6	107040210	9.979	422.8	21	107040210	9.980	424.8
7	107040210	9.986	423.7	22	107040210	9.986	425.4
8	107040210	9.992	425.8	23	107040210	9.988	426.2
9	107040210	9.998	425.2	24	107040210	9.991	425.3
10	107040210	9.997	425.4	25	107040210	9.989	425.7
11	107040210	9.930	422.9	26	107040210	9.942	422.2
12	107040210	9.898	424.8	27	107040210	9.942	425.2
13	107040210	9.898	424.4	28	107040210	9.975	422.8
14	107040210	9.977	424.3	29	107040210	9.953	425.8
15	107040210	9.986	425.7	30	107040210	9.954	425.8
16	107040210	9.988	425.3	31	107040210	9.956	422.1
17	107040210	9.967	425.8				

Modules: 33

Made in Singapore

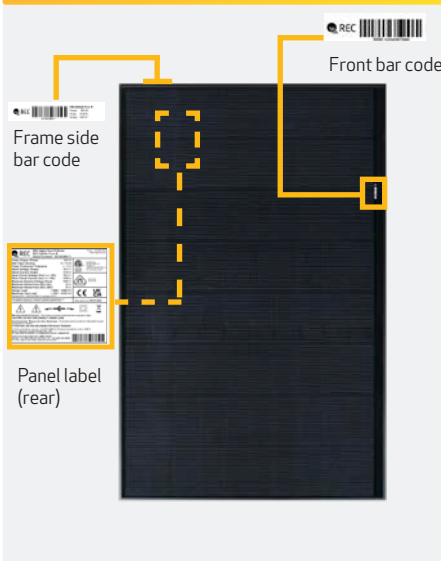
- Pallet No.1 is the top module in a stack
- Pallet No. 33 is the lowest module in a stack
- Pallet documentation shows:
 - ◊ Module serial number
 - ◊ Module bar code
 - ◊ Manufacturing date
 - ◊ Electrical data (IMP, PMP)

REC ALPHA PURE-R SERIES

PALLET FRONT VIEW (DOUBLE STACKED)



PANEL IDENTIFICATION



PALLET SHIPMENT DIMENSIONS

Length of Pallet:	1780 mm (70.1 in)
Width of Pallet:	1150 mm (45.3 in)
Height of Single Pallet Stack:	1220 mm (48.0 in)
Height of Double Pallet Stack:	2440 mm (96.1 in)
Pallet Weight:	39 kg (86 lbs)
Stack Weight (Pallet + Panels):	753 kg (1,660 lbs)

DELIVERY INFORMATION

Panels per Pallet:	33
Panels per 40 ft GP/high cube container:	858 (26 Pallets)
Panels per 13.6 m truck:	924 (28 Pallets)
Panels per 53 ft truck:	792 (24 Pallets)

DELIVERY DOCUMENTATION

Documentation is located on short side of pallet. Pallet documentation includes:

- Module flash data
- Serial Number
- Product Name
- Watt Class

PALLET SIDE VIEW (DOUBLE STACKED)



PALLET STACKING



PACKAGING MATERIAL

Pallet:	Wood
Foam pad:	Polyurethane Polyether Polyol
Top Cover:	Corrugated Cardboard
Edge Protectors:	Coreboard - Kraft
Corner pieces and spacers:	HDPE

STORAGE AND TRANSPORTATION

Stacking for Storage:	2 max
Stacking for Transportation:	2 max

NOTE: When double stacking pallets, ensure the upper pallet sits securely on the edge protector to avoid damage to the lower pallet during transportation or handling:

NOTE: Pallets delivered stacked are not bound together:

MINIMUM FORK LENGTHS FOR TRANSPORTATION

	SINGLE/DOUBLE STACK ONLY	
FORKLIFT	Long side	1.2 m
	Short side	1.5 m
PALLET JACK	Long side	
	Short side	1.5 m

NOTE: Forks must be spaced a minimum of 500 mm apart

NOTE: Handlers must ensure that vehicles used for REC pallets can handle the specified load safely.

NOTE: Specifications subject to change without notice

PACKAGING DOCUMENTATION

REC410AA Pure-R

Part: **Top 6002462** Pallet No: **L3394796_AAAA**

No.	Serial Number	Imp[A]	Pmp[W]	No.	Serial Number	Imp[A]	Pmp[W]
1)	4008721047	9.587	396.8	18)	4008720963	9.589	395.9
2)	4008721051	9.563	396.8	19)	4008721071	9.594	396.8
3)	4008720948	9.576	397.6	20)	4008721041	9.589	396.7
4)	4008721058	9.582	396.7	21)	4008721040	9.578	397.8
5)	4008720969	9.586	396.1	22)	4008721042	9.572	395.9
6)	4008721128	9.590	399.8	23)	4008721036	9.592	399.8
7)	4008721173	9.566	396.7	24)	4008720928	9.576	397.3
8)	4008721014	9.589	396.1	25)	4008721083	9.611	397.6
9)	4008721078	9.530	397.2	26)	4008721049	9.568	395.4
10)	4008721114	9.578	396.6	27)	4008721033	9.559	395.9
11)	4008720943	9.584	396.8	28)	4008721040	9.571	396.1
12)	4008721084	9.580	396.1	29)	4008721166	9.586	395.1
13)	4008721088	9.594	396.3	30)	4008721048	9.598	397.4
14)	4008721072	9.579	396.2	31)	4008720938	9.569	395.5
15)	4008721075	9.593	396.7	32)	4008721070	9.566	395.8
16)	4008721087	9.593	397.8	33)	4008721070	9.588	395.3
17)	4008721064	9.563	396.1				

Attention! Vorsicht!

Weight: 753 kg (1660 lbs)
Improper handling will damage the content

Gewicht: 753 kg (1660 lbs)
Unsachgemäßer Transport führt zur Beschädigung der Ware

Quality Stamp: 17/06/2021 10:43 ACCEPTED

Panel Handling: Attention! Wear clean gloves

Installation instructions:
Installationsanleitungen:
Guides d'emploi:
设置指南:
www.recgroup.com/download

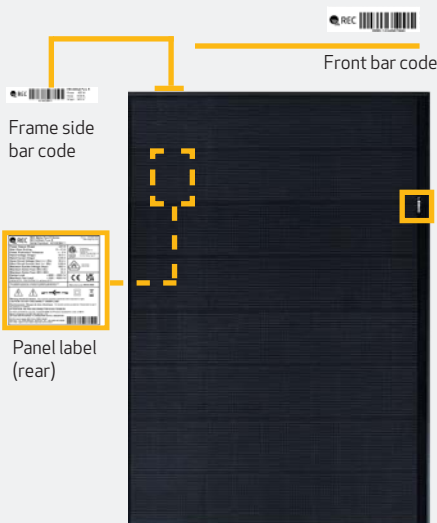
- Pallet No.1 is the top module in a stack
- Pallet No. 33 is the lowest module in a stack
- Pallet documentation shows:
 - ◇ Module serial number
 - ◇ Module bar code
 - ◇ Manufacturing date
 - ◇ Electrical data (IMP, PMP)

REC ALPHA PURE-RX SERIES

PALLET FRONT VIEW (DOUBLE STACKED)



PANEL IDENTIFICATION



PALLET SHIPMENT DIMENSIONS

Length of Pallet:	1780 mm (70.1 in)
Width of Pallet:	1240 mm (48.8 in)
Height of Single Pallet Stack:	1220 mm (48.0 in)
Height of Double Pallet Stack:	2440 mm (96.1 in)
Pallet Weight:	40 kg (88 lbs)
Stack Weight (Pallet + Panels):	812 kg (1,790 lbs)

DELIVERY INFORMATION

Panels per Pallet:	33
Panels per 40 ft GP/high cube container:	594 (18 Pallets)
Panels per 13.6 m truck:	660 (20 Pallets)
Panels per 53 ft truck:	792 (24 Pallets)

DELIVERY DOCUMENTATION

Documentation is located on short side of pallet. Pallet documentation includes:

- Module flash data
- Serial Number
- Product Name
- Watt Class

PALLET SIDE VIEW (DOUBLE STACKED)



PALLET STACKING



PACKAGING MATERIAL

Pallet:	Wood
Foam pad:	Polyurethane Polyether Polyo
Top Cover:	Corrugated Cardboard
Edge Protectors:	0
Corner pieces and spacers:	0

STORAGE AND TRANSPORTATION

Stacking for Storage:	2 max
Stacking for Transportation:	2 max

NOTE: When double stacking pallets, ensure the upper pallet sits securely on the edge protector to avoid damage to the lower pallet during transportation or handling.

NOTE: Pallets delivered stacked are not bound together.

MINIMUM FORK LENGTHS FOR TRANSPORTATION

	SINGLE/DOUBLE STACK ONLY	
FORKLIFT	Long side	1.2 m
	Short side	1.5 m
PALLET JACK	Long side	
	Short side	1.5 m

NOTE: Forks must be spaced a minimum of 500 mm apart

NOTE: Handlers must ensure that vehicles used for REC pallets can handle the specified load safely.

NOTE: Specifications subject to change without notice

PACKAGING DOCUMENTATION

REC460AA Pure-RX

Part: **6000000** Pallet No: **L1234567_AAAA**

Qty	Serial Number	ImpQ	ProgQ	Qty	Serial Number	ImpQ	ProgQ
1	WPM460019	8.261	0001	20	WPM460019	8.261	0001
2	WPM460019	8.261	0002	20	WPM460019	8.261	0002
3	WPM460019	8.262	0003	20	WPM460019	8.262	0003
4	WPM460019	8.262	0004	20	WPM460019	8.262	0004
5	WPM460019	8.262	0005	20	WPM460019	8.262	0005
6	WPM460019	8.262	0006	20	WPM460019	8.262	0006
7	WPM460019	8.262	0007	20	WPM460019	8.262	0007
8	WPM460019	8.262	0008	20	WPM460019	8.262	0008
9	WPM460019	8.262	0009	20	WPM460019	8.262	0009
10	WPM460019	8.262	0010	20	WPM460019	8.262	0010
11	WPM460019	8.262	0011	20	WPM460019	8.262	0011
12	WPM460019	8.262	0012	20	WPM460019	8.262	0012
13	WPM460019	8.262	0013	20	WPM460019	8.262	0013
14	WPM460019	8.262	0014	20	WPM460019	8.262	0014
15	WPM460019	8.262	0015	20	WPM460019	8.262	0015
16	WPM460019	8.262	0016	20	WPM460019	8.262	0016
17	WPM460019	8.262	0017	20	WPM460019	8.262	0017
18	WPM460019	8.262	0018	20	WPM460019	8.262	0018
19	WPM460019	8.262	0019	20	WPM460019	8.262	0019
20	WPM460019	8.262	0020	20	WPM460019	8.262	0020
21	WPM460019	8.262	0021	20	WPM460019	8.262	0021
22	WPM460019	8.262	0022	20	WPM460019	8.262	0022
23	WPM460019	8.262	0023	20	WPM460019	8.262	0023
24	WPM460019	8.262	0024	20	WPM460019	8.262	0024
25	WPM460019	8.262	0025	20	WPM460019	8.262	0025
26	WPM460019	8.262	0026	20	WPM460019	8.262	0026
27	WPM460019	8.262	0027	20	WPM460019	8.262	0027
28	WPM460019	8.262	0028	20	WPM460019	8.262	0028
29	WPM460019	8.262	0029	20	WPM460019	8.262	0029
30	WPM460019	8.262	0030	20	WPM460019	8.262	0030
31	WPM460019	8.262	0031	20	WPM460019	8.262	0031
32	WPM460019	8.262	0032	20	WPM460019	8.262	0032
33	WPM460019	8.262	0033	20	WPM460019	8.262	0033

Modules: 33

Made in Singapore

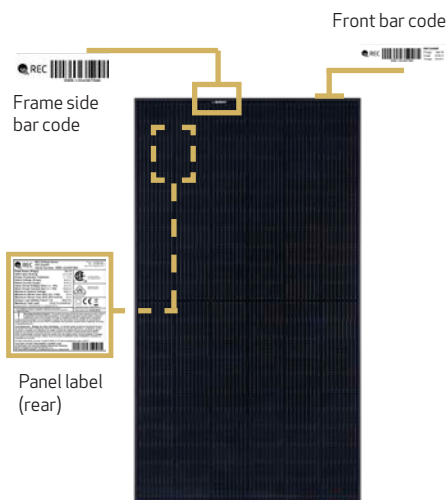
- Pallet No.1 is the top module in a stack
- Pallet No. 33 is the lowest module in a stack
- Pallet documentation shows:
 - ◊ Module serial number
 - ◊ Module bar code
 - ◊ Manufacturing date
 - ◊ Electrical data (IMP, PMP)

REC N-PEAK 3 SERIES (ONLY AVAILABLE IN THE USA)

PALLET FRONT VIEW (DOUBLE STACKED)



PANEL IDENTIFICATION



PALLET SHIPMENT DIMENSIONS

Length of Pallet:	1950 mm (76.8 in)
Width of Pallet:	1090 mm (42.9 in)
Height of Single Pallet Stack:	1205 mm (47.4 in)
Height of Double Pallet Stack:	2410 mm (94.9 in)
Pallet Weight:	40 kg (88 lbs)
Stack Weight (Pallet + Panels):	753 kg (1,660 lbs)

DELIVERY INFORMATION

Panels per Pallet:	33
Panels per 40 ft GP/high cube container:	792 (24 Pallets)
Panels per 13.6 m truck:	924 (24 Pallets)
Panels per 53 ft truck:	858 (26 Pallets)

DELIVERY DOCUMENTATION

Documentation is located on short side of pallet. Pallet documentation includes:

- Module flash data
- Serial Number
- Product Name
- Watt Class

PACKAGING MATERIAL

Pallet:	Wood
Foam pad:	Polyurethane Polyether Polyol
Top Cover:	Corrugated Cardboard
Edge Protectors:	Coreboard - Kraft
Corner pieces and spacers:	HDPE

STORAGE AND TRANSPORTATION

Stacking for Storage:	2 max
Stacking for Transportation:	2 max

NOTE: When double stacking pallets, ensure the upper pallet sits securely on the edge protector to avoid damage to the lower pallet during transportation or handling:

NOTE: Pallets delivered stacked are not bound together:

MINIMUM FORK LENGTHS FOR TRANSPORTATION

	SINGLE/DOUBLE STACK ONLY	
FORKLIFT	Long side	1.2 m
	Short side	1.5 m
PALLET JACK	Long side	
	Short side	1.5 m

NOTE: Forks must be spaced a minimum of 500 mm apart

NOTE: Handlers must ensure that vehicles used for REC pallets can handle the specified load safely.

NOTE: Specifications subject to change without notice

PACKAGING DOCUMENTATION

[illegible]

- Pallet No. 1 is the top module in a stack
- Pallet No. 33 is the lowest module in a stack
- Pallet documentation shows:
 - ◇ Module serial number
 - ◇ Module bar code
 - ◇ Manufacturing date
 - ◇ Electrical data (IMP, PMP)



REC SOLAR PTE. LTD.
20 TUAS SOUTH AVENUE 14
SINGAPORE 637312
Tel: +65 6495 9228
Mail: post@recgroup.com

www.recgroup.com