

SOLAR'S MOST TRUSTED



PACKAGING & SHIPMENT SPECIFICATIONS

Applicable for the following REC solar panels:

REC Alpha Series

REC Alpha Black Series

REC Alpha 72 Series

REC Alpha Pure Series



CONTENTS

INTRODUCTION.....	3
Quality.....	3
Pallet Handling.....	3
Recycling.....	3
REC ALPHA SERIES.....	4
REC Alpha Series.....	4
REC Alpha Black Series.....	4
REC ALPHA PURE SERIES.....	5
REC Alpha Pure Series.....	5
REC ALPHA 72 SERIES.....	6
REC Alpha 72 Series.....	6

INTRODUCTION

REC believes that the packaging of our products is just as important as the product itself. To ensure our solar panels arrive with our customers in as good condition as possible, REC takes every care to ensure a high quality level of packaging and uses international testing standards to ensure the panels reach their destination in the best condition. Except where specifically stated, the information given on the following pages is relevant to all modules in the product family named and is therefore applicable to all product variants, e.g., different colored frames, backsheets, and/or cell types. The images shown are a generic representation of the instructions regardless of color or exact design.



PALLET HANDLING

This document contains instructions concerning the use and handling of pallets of REC solar panels. Following these instructions will ensure that the panels are in the best condition upon arrival at the installation site. Misuse or failure to follow these procedures may lead to damage or injury, and may invalidate the warranty on the product.

QUALITY

REC performs a quality check on all pallets before and during loading. Vehicles will only be loaded if they are deemed safe and serviceable. During transportation, the pallets are stably loaded in protected containers with air bags between them to secure them in position. The freight company and driver are responsible for ensuring suitable load safety for each delivery vehicle. Vehicles without suitable load safety measures will not be loaded. Loading without the use of air bags or loading belts to secure the pallets may lead to damage to the pallet(s) and/or module(s) during transportation which may invalidate the warranty. If using loading belts to secure pallets, ensure these are correctly fitted as over-tightening may cause damage to the modules or pallet(s).



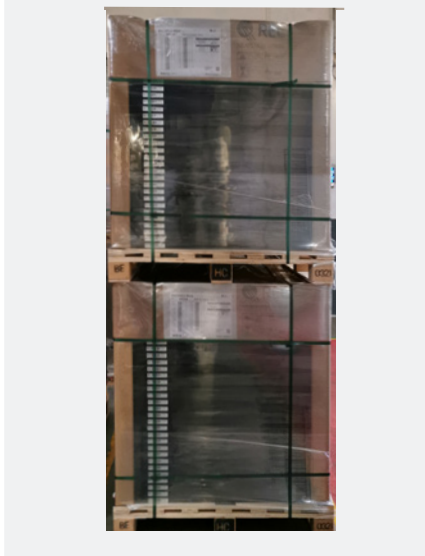
RECYCLING

REC makes every effort to ensure the panel packaging is kept to a minimum and that environmentally-friendly materials are used wherever possible. This minimizes waste and discarded items to dispose of at the installation site. The wooden pallets can be re-used or recycled. The paper and cardboard packaging used on REC pallets can be also be widely recycled and the protective wrapping and panel separating blocks are also recyclable in many areas. Please check for all applicable procedures and recycle all packaging and panels according to local guidelines and regulations. REC makes every effort to ensure environmentally-friendly packaging materials are used. Please recycle whenever possible.

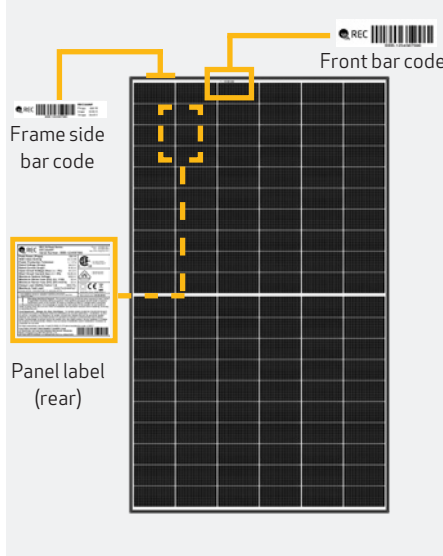
REC ALPHA SERIES

These packaging specifications are applicable to the following products:
REC Alpha Series REC Alpha Black Series

PALLET FRONT VIEW (DOUBLE STACKED)



PANEL IDENTIFICATION



PALLET SHIPMENT DIMENSIONS

Length of pallet:	1769 mm (70 in)
Width of pallet:	1064 mm (42 in)
Height of single pallet stack:	1225 mm (48 in)
Height of double pallet stack:	2450 mm (96 in)
Pallet weight:	42 kg (93 lbs)
Stack weight (pallet + panels):	ca. 686 kg (1512 lbs)

DELIVERY INFORMATION

Panels per pallet:	33
Panels per 40 ft GP/high cube container:	858 (26 pallets)
Panels per 13.6 m truck:	990 (30 pallets)
Panels per 53 ft truck:	957 (29 pallets)

PALLET SIDE VIEW (DOUBLE STACKED)



PALLET STACKING



DELIVERY DOCUMENTATION

Documentation is located on short side of pallet.
Pallet documentation includes:

- Module flash data
- Serial number
- Product name
- Watt class

PACKAGING MATERIAL

Pallet:	Wood
Foam pad:	Polyurethane Polyether Polyol
Top cover:	Corrugated cardboard
Edge protectors:	Core board - Kraft
Corner pieces and spacers:	HDPE

PACKAGING DOCUMENTATION

REC350AA

Part: **6001858** Pallet No: M125199_ AAAA

No	Serial Number	Top	Bottom
1)	2087780831	9.658 323.5	19) 2087781096
2)	2087780834	9.647 323.9	20) 2087781097
3)	2087780953	9.644 323.8	21) 2087781309
4)	2087781030	9.641 323.5	22) 2087780888
5)	2087781084	9.672 324.4	23) 2087780846
6)	2087781408	9.609 323.3	24) 2087781303
7)	2087781080	9.641 323.9	25) 2087780792
8)	2087781047	9.634 323.5	26) 2087780779
9)	2087780632	9.642 324.8	27) 2087780827
10)	2087780877	9.655 323.1	28) 2087780842
11)	2087780725	9.656 324.4	29) 2087780847
12)	2087780875	9.647 324.1	30) 2087780848
13)	2087780879	9.671 324.0	31) 2087780864
14)	2087780879	9.641 324.4	32) 2087780963
15)	2087781087	9.648 323.6	33) 2087780804
16)	2087780839	9.650 323.5	34) 2087781059
17)	2087781286	9.655 324.7	

Modules: 33

Made in Singapore

Attention! Vorsicht!

Weight: NA
Improper handling will damage the content.

Weight: NA
Unsachgemäßer Transport führt zur Beschädigung der Ware.

Quality Stamp
14/05/2019 10:50
ACCEPTED

Panel Handling
Attention
Wear clean gloves

Installation instructions:
Installationsanleitungen:
Guides d'emploi:
設置説明書:
www.recgroup.com/downloads

STORAGE AND TRANSPORTATION

Stacking for storage:	2 pallets max
Stacking for transportation:	2 pallets max

Note: When double stacking pallets, ensure the upper pallet sits securely on the edge protector to avoid damage to the lower pallet during transportation or handling

Note: Pallets delivered stacked are not bound together

MINIMUM FORK LENGTHS FOR TRANSPORTATION

		Single/Double stack only
Forklift	Long side	1.2 m (47 in)
	Short side	1.5 m (59 in)
Pallet jack	Long side	X
	Short side	1.5 m (59 in)

Note: Forks must be spaced a minimum of 500 mm apart
Handlers must ensure that vehicles used for REC pallets can handle the specified load safely.

Note: Specifications subject to change without notice

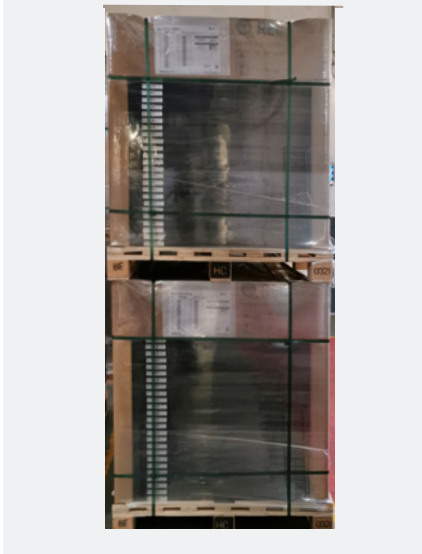
- Pallet No.1 is the top module in a stack
- Pallet No. 33 is the lowest module in a stack
- Pallet documentation shows:
 - Module serial number
 - Module bar code
 - Manufacturing date
 - Electrical data (I_{SC} , I_{MP} , V_{OC} , V_{MP} , P_{MP} , Fill Factor)



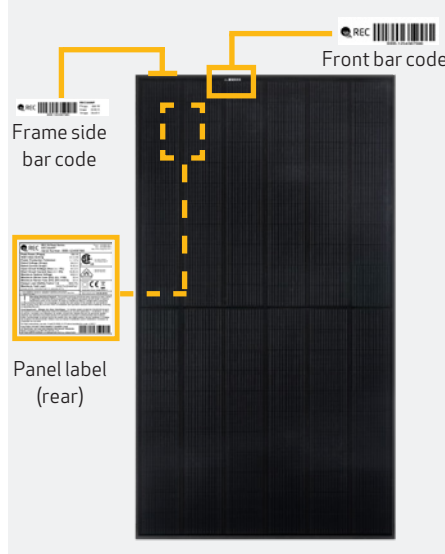
REC ALPHA PURE SERIES

These packaging specifications are applicable to the following products:
REC Alpha Pure Series

PALLET FRONT VIEW (DOUBLE STACKED)



PANEL IDENTIFICATION



PALLET SHIPMENT DIMENSIONS

Length of pallet:	1880 mm (74 in)
Width of pallet:	1055 mm (41.5 in)
Height of single pallet stack:	1205 mm (47.5 in)
Height of double pallet stack:	2410 mm (95 in)
Pallet weight:	41 kg (90.4 lbs)
Stack weight (pallet + panels):	ca. 735 kg (1620 lbs)

DELIVERY INFORMATION

Panels per pallet:	33
Panels per 40 ft GP/high cube container:	792 (24 pallets)
Panels per 13.6 m truck:	924 (28 pallets)
Panels per 53 ft truck:	891 (27 pallets)

PALLET SIDE VIEW (DOUBLE STACKED)



PALLET STACKING



DELIVERY DOCUMENTATION

Documentation is located on short side of pallet.
Pallet documentation includes:

- Module flash data
- Serial number
- Product name
- Watt class

PACKAGING MATERIAL

Pallet:	Wood
Foam pad:	Polyurethane Polyether Polyol
Top cover:	Corrugated cardboard
Edge protectors:	Core board - Kraft
Corner pieces and spacers:	HDPE

PACKAGING DOCUMENTATION

REC395AA Pure

Part: **Top 2462**

Pallet No: L3394796_AAAA

No.	Serial Number	Imp(A)	Prog(W)	No.	Serial Number	Imp(A)	Prog(W)
1)	4008721147	9.587	396.8	18)	4008720961	9.588	395.9
2)	4008721051	9.583	396.8	19)	4008721071	9.594	396.8
3)	4008720948	9.576	397.6	20)	4008721041	9.590	396.7
4)	4008721168	9.582	396.7	21)	4008721043	9.578	397.0
5)	4008720969	9.586	396.1	22)	4008721042	9.572	395.9
6)	4008721128	9.590	399.0	23)	4008721036	9.592	399.0
7)	4008721171	9.566	396.7	24)	4008720920	9.576	397.3
8)	4008721014	9.589	396.1	25)	4008721003	9.611	397.6
9)	4008721070	9.580	397.2	26)	4008721049	9.568	395.6
10)	4008721114	9.578	396.6	27)	4008721033	9.559	395.9
11)	4008720943	9.584	396.4	28)	4008721040	9.571	396.1
12)	4008721084	9.580	396.1	29)	4008721166	9.586	395.1
13)	4008721086	9.594	396.3	30)	4008721048	9.598	397.4
14)	4008721072	9.579	396.2	31)	4008720908	9.569	395.5
15)	4008721075	9.593	396.7	32)	4008720950	9.566	395.8
16)	4008721087	9.593	397.0	33)	4008720950	9.588	395.3
17)	4008721064	9.563	396.1				

Attention! Vorsicht!

Weight: 735 kg (1620 lbs) Gewicht: 735 kg (1620 lbs)

Improper handling will damage the content. Unsachgemäßer Transport führt zur Beschädigung der Ware.

Quality Stamp: 17/06/2021 10:43 ACCEPTED

Panel Handling: Attention! Wear clean gloves

Installation instructions: Installationsanleitungen: Guides d'emploi: 01.03.16/16

Made in Singapore

STORAGE AND TRANSPORTATION

Stacking for storage:	2 pallets max
Stacking for transportation:	2 pallets max

Note: When double stacking pallets, ensure the upper pallet sits securely on the edge protector to avoid damage to the lower pallet during transportation or handling

Note: Pallets delivered stacked are not bound together

MINIMUM FORK LENGTHS FOR TRANSPORTATION

		Single/Double stack only
Forklift	Long side	1.2 m (47 in)
	Short side	1.5 m (59 in)
Pallet jack	Long side	X
	Short side	1.5 m (59 in)

Note: Forks must be spaced a minimum of 500 mm apart
Handlers must ensure that vehicles used for REC pallets can handle the specified load safely.

Note: Specifications subject to change without notice

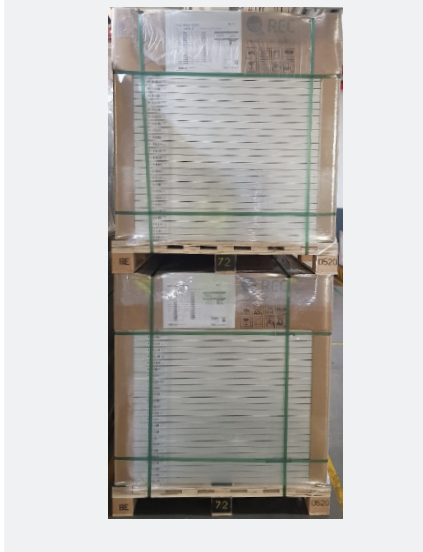
- Pallet No. 1 is the top module in a stack
- Pallet No. 33 is the lowest module in a stack
- Pallet documentation shows:
 - Module serial number
 - Module bar code
 - Manufacturing date
 - Electrical data (I_{SC} , I_{MP} , V_{OC} , V_{MP} , P_{MP} , Fill Factor)



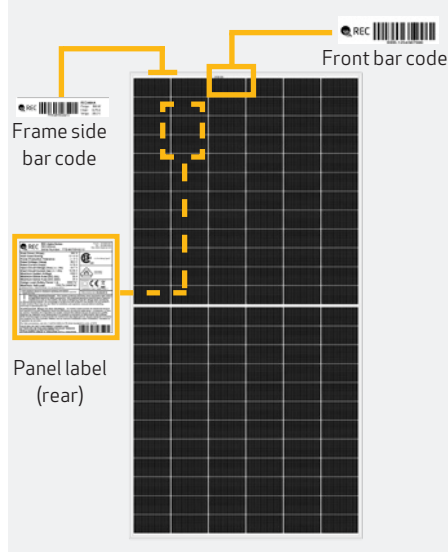
REC ALPHA 72 SERIES

These packaging specifications are applicable to the following products:
REC Alpha 72 Series

PALLET FRONT VIEW (DOUBLE STACKED)



PANEL IDENTIFICATION



PALLET SHIPMENT DIMENSIONS

Length of pallet:	2100 mm (83 in)
Width of pallet:	1074 mm (42 in)
Height of single pallet stack:	1205 mm (47 in)
Height of double pallet stack:	2410 mm (95 in)
Pallet weight:	45 kg (99 lbs)
Stack weight (pallet + panels):	ca. 824 kg (1817 lbs)

DELIVERY INFORMATION

Panels per pallet:	33
Panels per 40 ft GP/high cube container:	726 (22 pallets)
Panels per 13.6 m truck:	792 (24 pallets)
Panels per 53 ft truck:	792 (24 pallets)

PALLET SIDE VIEW (DOUBLE STACKED)



PALLET STACKING



DELIVERY DOCUMENTATION

Documentation is located on short side of pallet.
Pallet documentation includes:

- Module flash data
- Serial number
- Product name
- Watt class

PACKAGING MATERIAL

Pallet:	Wood
Foam pad:	Polyurethane Polyether Polyol
Top cover:	Corrugated cardboard
Edge protectors:	Core board - Kraft
Corner pieces and spacers:	HDPE

PACKAGING DOCUMENTATION

REC440AA 72 XV

Part: **6002117** Pallet No: **L3353510_AAAA**

Top

No.	Serial Number	Imp(A)	Prog(W)	No.	Serial Number	Imp(A)	Prog(W)
1	4407210389	9.967	443.8	18	4407210354	9.969	442.2
2	4407210878	9.959	442.3	19	4407210854	9.962	442.3
3	4407210389	9.962	443.8	20	4407210795	9.985	442.4
4	4407210389	9.962	443.8	21	4407210354	9.964	442.3
5	4407210389	9.962	443.8	22	4407210852	9.989	446.7
6	4407210789	9.952	442.2	23	4407210829	9.967	442.7
7	4407210794	9.955	442.7	24	4407210823	9.972	446.6
8	4407210835	9.962	443.6	25	4407210842	9.961	446.6
9	4407210749	9.968	442.9	26	4407210753	9.961	446.6
10	4407210797	9.965	442.8	27	4407210744	9.972	442.4
11	4407210389	9.952	442.2	28	4407210389	9.951	442.5
12	4407210829	9.967	446.6	29	4407210742	9.959	442.3
13	4407210389	9.958	442.3	30	4407210389	9.964	446.6
14	4407210389	9.969	446.3	31	4407210847	9.967	442.3
15	4407210389	9.924	442.9	32	4407210738	9.954	442.3
16	4407210389	9.961	446.6	33	4407210754	9.969	446.9
17	4407210821	9.924	442.9				

Bottom

Modules: 33

Made in Singapore

Attention! Vorsicht!

Weight: 824 kg (1817 lbs) Gewicht: 824 kg (1817 lbs)

Improper handling will damage the content. Unsachgemäßer Transport führt zur Beschädigung der Ware.

Quality Stamp: 03-109-2020 12:39 ACCEPTED

Panel Handling: Attention! Wear clean gloves

Installation instructions: Guides d'emploi: 45-2500-015 www.recgroup.com/techinfo

STORAGE AND TRANSPORTATION

Stacking for storage:	2 pallets max
Stacking for transportation:	2 pallets max

Note: When double stacking pallets, ensure the upper pallet sits securely on the edge protector to avoid damage to the lower pallet during transportation or handling

Note: Pallets delivered stacked are not bound together

MINIMUM FORK LENGTHS FOR TRANSPORTATION

		Single/Double stack only
Forklift	Long side	1.2 m (47 in)
	Short side	1.8 m (71 in)
Pallet jack	Long side	X
	Short side	1.8 m (71 in)

Note: Forks must be spaced a minimum of 500 mm apart
Handlers must ensure that vehicles used for REC pallets can handle the specified load safely.

Note: Specifications subject to change without notice

- Pallet No.1 is the top module in a stack
- Pallet No. 33 is the lowest module in a stack
- Pallet documentation shows:
 - Module serial number
 - Module bar code
 - Manufacturing date
 - Electrical data (I_{SC} , I_{MP} , V_{OC} , V_{MP} , P_{MP} , Fill Factor)





REC SOLAR PTE. LTD.
20 TUAS SOUTH AVENUE 14
SINGAPORE 637312
Tel: +65 6495 9228
Mail: post@recgroup.com

www.recgroup.com