

ITEM NO.	DESCRIPTION	QTY.
1	CAP SCREW, HEX HEAD, 5/16"-18 X 3/4" UNC-2A, GRADE 8	1
2	QBASE, 1-1/4" ID, FOR 5/16" HARDWARE, A360.1 CAST AL	1
3	LAG SCREW, HEX HEAD, 5/16" X 3", ZINC	2
4	SUB-FLASHING, SPUN CONE, 9"X9"X.020", 3003 AL, MILL	1
5	FLASHING, SPUN CONE, 18"X18"X.032", 3003 AL, MILL	1
6	COLLAR, COUNTER FLASHING, 1-1/4" ID EPDM	1
7	POST, 1.25" OD X 4.5", 6063-T5/6063-T6, MILL	1
8	WASHER, SEALING, 5/16" ID X 1-1/4" OD, EPDM BONDED SS	1
9	WASHER, FENDER, 5/16" ID X 1" OD, 18-8 SS	1
10	WASHER, SPLIT-LOCK, 5/16" ID, 18-8 SS	1
11	CAP SCREW, HEX HEAD, 5/16"-18 X 1" UNC-2A, 18-8 SS	1

AVAILABLE IN MILL FINISH, CLEAR ANODIZED,
AND BRONZE ANODIZED FINISHES

STAINLESS STEEL LAG SCREWS INCLUDED WITH ANODIZED FINISHES

Quick Mount PV[®]

TITLE:

**QMSFT: QBASE STANDARD FLAT
TILE MOUNT**

UNLESS OTHERWISE SPECIFIED:

DIMENSIONS ARE IN INCHES
TOLERANCES:
FRACTIONAL $\pm 1/8$
TWO PLACE DECIMAL $\pm .18$
THREE PLACE DECIMAL $\pm .125$

SIZE

A

DRAWN BY: RAD

DATE: 6/19/2015

REV

4

SCALE: 1:5

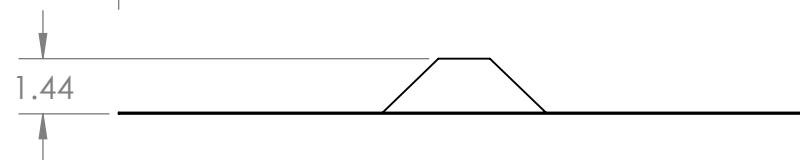
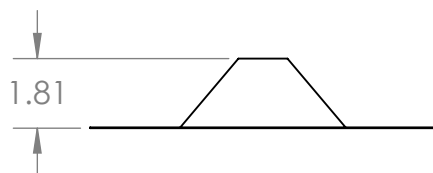
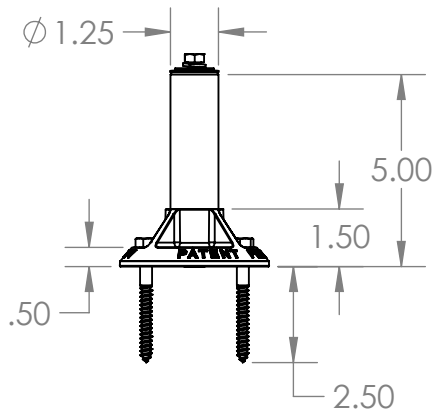
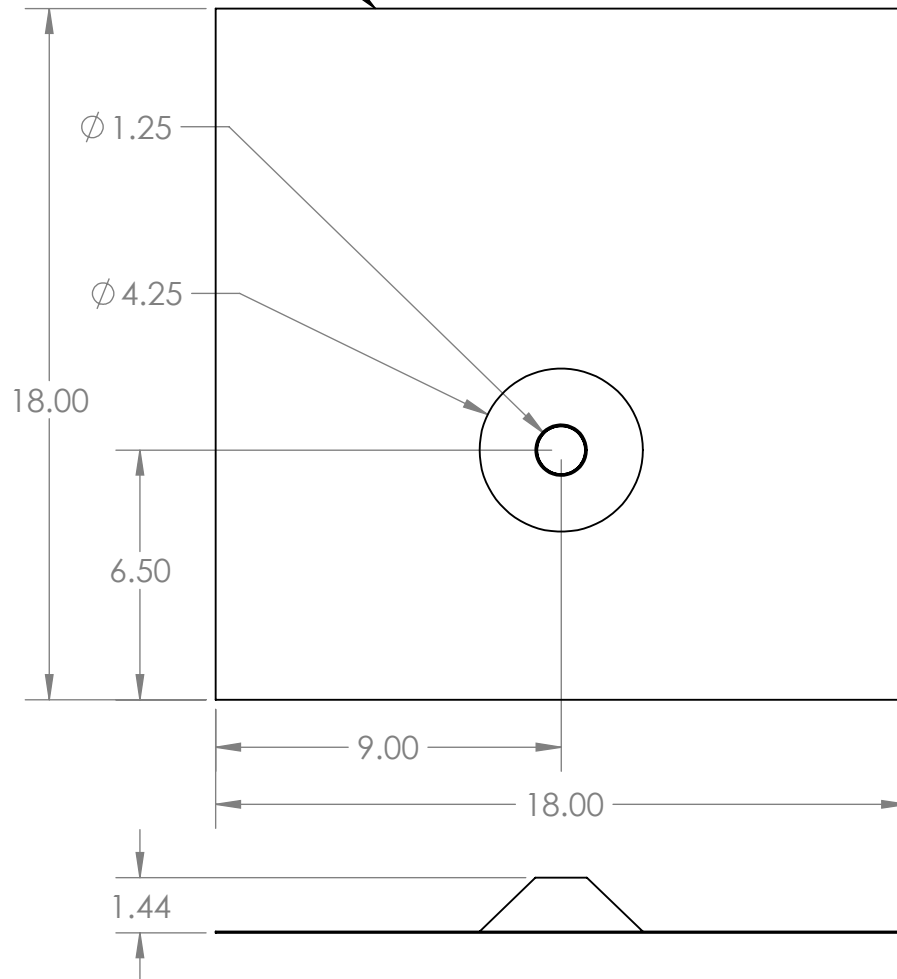
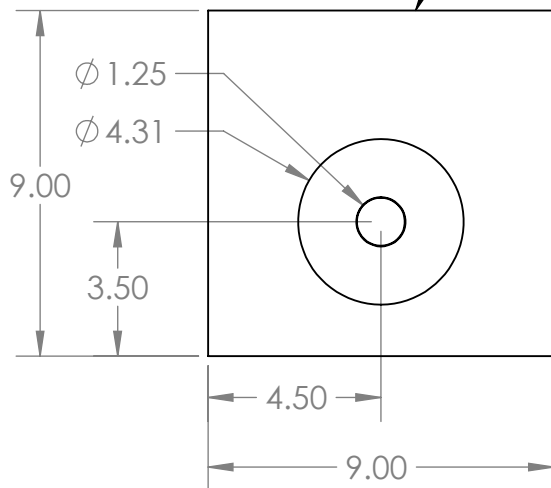
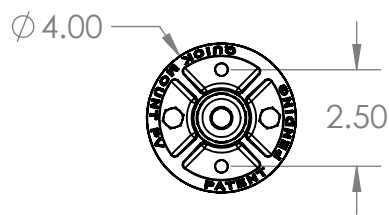
WEIGHT: 2.16

SHEET 1 OF 2

PROPRIETARY AND CONFIDENTIAL
THE INFORMATION CONTAINED IN THIS DRAWING IS THE SOLE PROPERTY OF QUICK MOUNT PV. ANY REPRODUCTION IN PART OR AS A WHOLE WITHOUT THE WRITTEN PERMISSION OF QUICK MOUNT PV IS PROHIBITED.

DO NOT SCALE DRAWING

THIS EDGE TOWARDS ROOF RIDGE



Quick Mount PV[®]

TITLE:
**QMSFT: QBASE STANDARD FLAT
TILE MOUNT**

UNLESS OTHERWISE SPECIFIED:

DIMENSIONS ARE IN INCHES
TOLERANCES:
FRACTIONAL $\pm 1/8$
TWO PLACE DECIMAL $\pm .18$
THREE PLACE DECIMAL $\pm .125$

SIZE	DRAWN BY:	REV
A	RAD	4
SCALE: 1:5	DATE: 6/19/2015	WEIGHT: 2.16
SHEET 2 OF 2		

PROPRIETARY AND CONFIDENTIAL
THE INFORMATION CONTAINED IN THIS DRAWING IS THE SOLE PROPERTY OF QUICK MOUNT PV. ANY REPRODUCTION IN PART OR AS A WHOLE WITHOUT THE WRITTEN PERMISSION OF QUICK MOUNT PV IS PROHIBITED.

DO NOT SCALE DRAWING