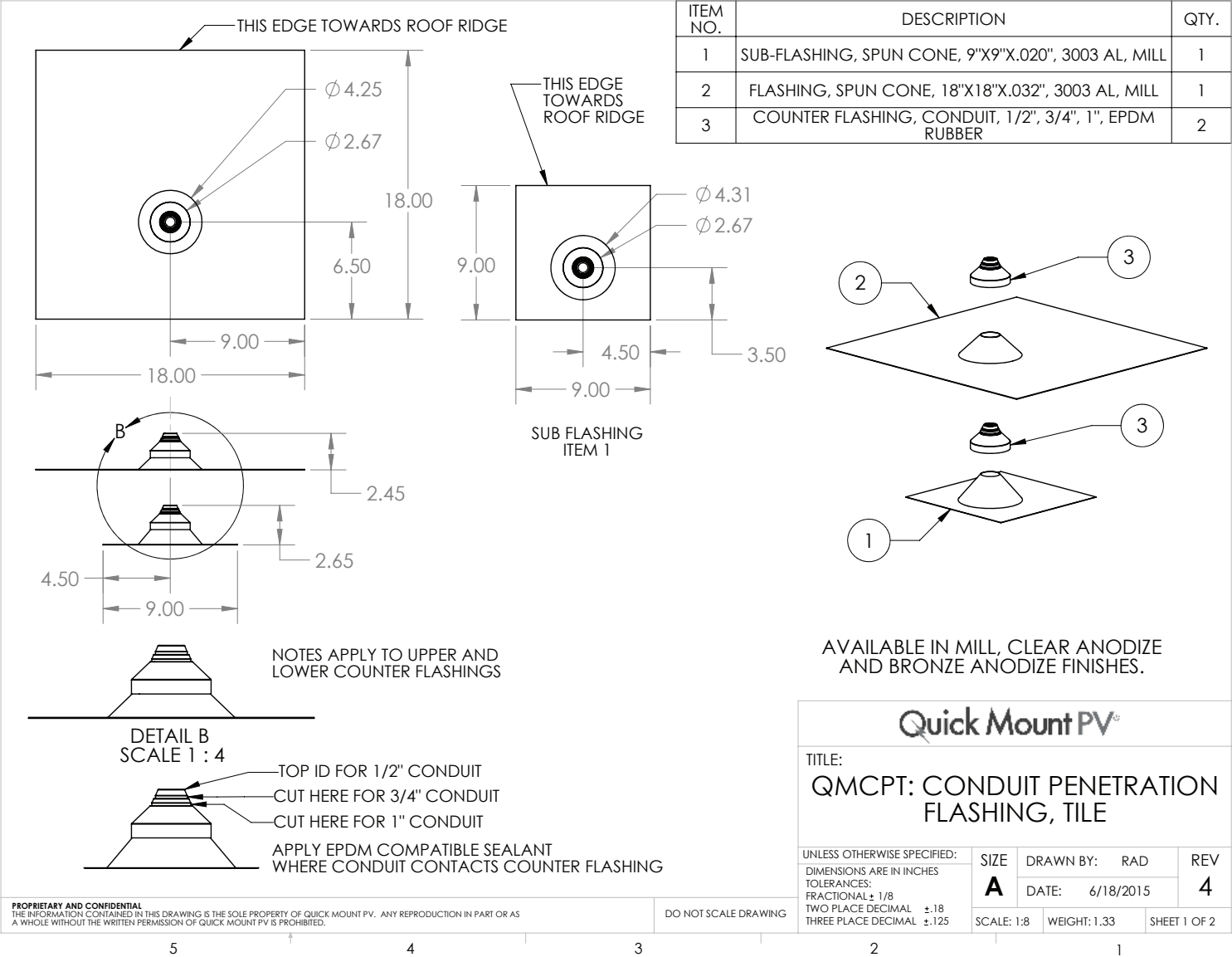


Tile Conduit Penetration Flashing | QMCPT

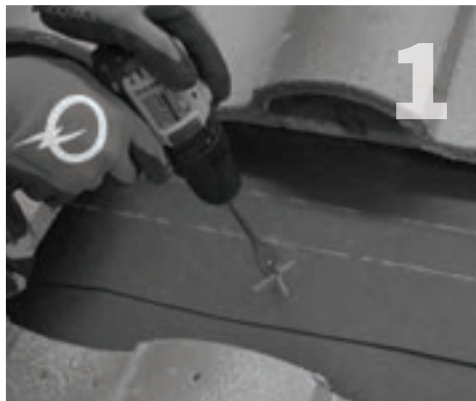
Drawing 1



Tile Conduit Penetration Flashing Installation Instructions

Installation Tools Required: tape measure, drill with paddle bit, caulking gun and sealant compatible with roofing material, hook blade, hammer, roofing nails, whisk broom, roofing bar, grinder with diamond blade.

The steps below include instructions for the lapped paper subflashing waterproofing method, see next page for three-course method.



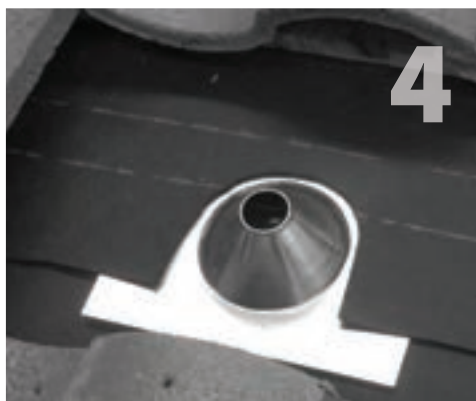
Drill your conduit hole next to the rafter so you can secure the conduit below the roof surface (see Drawing 2). For 1/2" conduit, drill a 7/8" hole; for 3/4" conduit, drill a 1" hole; for 1" conduit, drill a 1-1/4" hole.



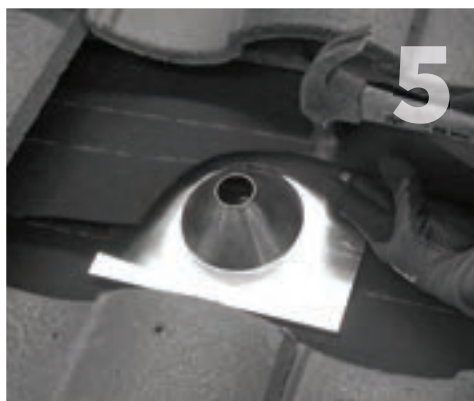
Apply sealant compatible with the roofing material on the underside of the subflashing in and upside down U.



Clear away any dust and debris and install subflashing in either the lapped paper method explained on this page or the three course method explained on the next page.



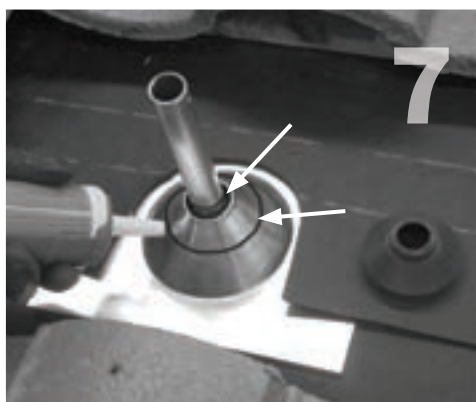
When using the paper method, slide subflashing under the felt overlap or cut an additional piece of felt paper 18" wide to slide under the course above the subflashing. Cut away the felt around the cone.



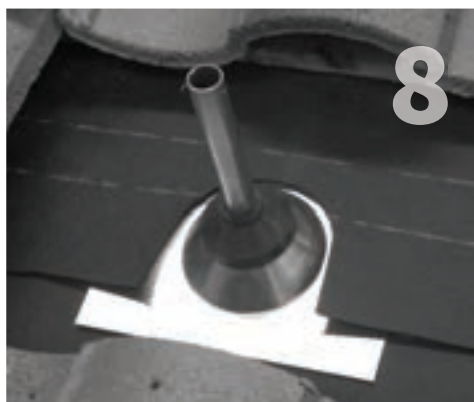
Under the top layer of felt, secure the subflashing with 2 roofing nails at the top corner of the subflashing. Apply sealant over the nail heads.



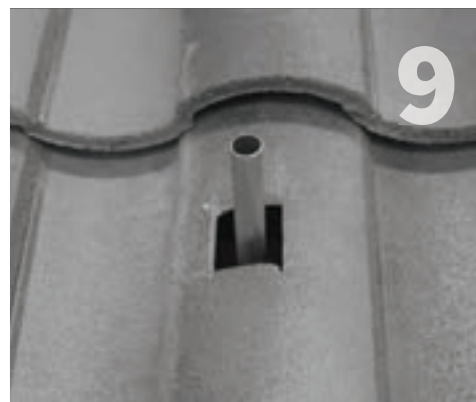
Cut the EPDM collar to appropriate conduit size (see Drawing 1, Detail B on cover).



Apply a bead of sealant compatible with both the roofing material and EPDM rubber to both the flashing and the conduit in the location of the EPDM collars final position.



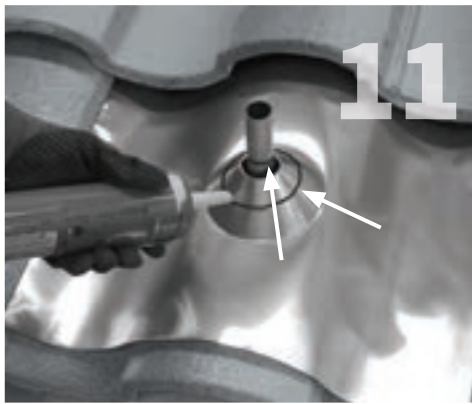
Slide the collar over the conduit all the way down to the flashing.



With a diamond blade on a grinder or skill-saw, cut tile to allow conduit to pass through. Place cut tile back in position.



Bend the flashing to follow the contour of the tiles. Place flashing over conduit and tuck it up under the next course of tiles.



Apply a bead of sealant compatible with the EPDM rubber to both the flashing and the conduit in the location of the EPDM collars final position.



Slide the appropriately cut collar over the conduit all the way down to the flashing.

Subflashing Waterproofing Method: Three-Course

Installation Tools Required: gloves, hammer, brush, roofing nails, roofing cement, trowel, roll of reinforcing fabric, sealant compatible with roofing material



Gather materials needed.



Apply 1/8" thick layer of roofing cement around the top and sides of subflashing with at least 1" extending past the sides of the flashing onto the felt.



Apply 3 pieces of reinforcing mesh where felt paper and flashing meet - a 14" strip along the top, and a 10" strip along each side.



Apply second layer of roofing cement on top reinforcing mesh. Follow steps 6-12 of the installation instructions on the previous page to complete the installation.

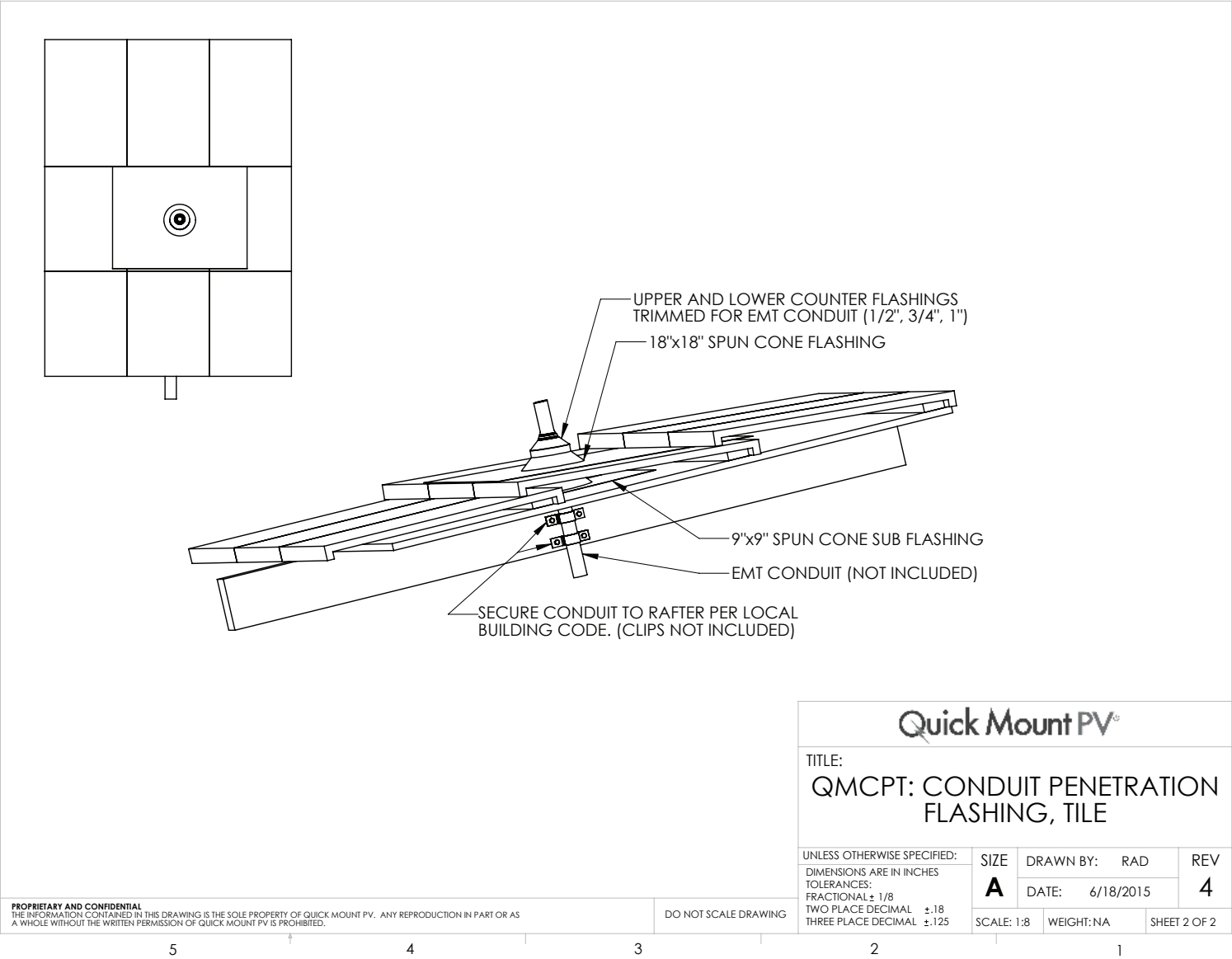
Your conduit penetration flashing is now complete and ready for additional electrical work. Be sure to secure conduit to rafters below the roof surface per local building codes and NEC code requirements.

All roofing manufacturers' written instructions must also be followed. Please consult the roof manufacturer's specs and instructions prior to touching the roof.

WARNING: Quick Mount PV products are NOT designed and should NOT be used to anchor fall protection equipment.

Tile Conduit Penetration Flashing | QMCPT

Drawing 2



925-478-8269 | www.quickmountpv.com | info@quickmountpv.com
2700 Mitchell Dr. | Walnut Creek, CA 94598