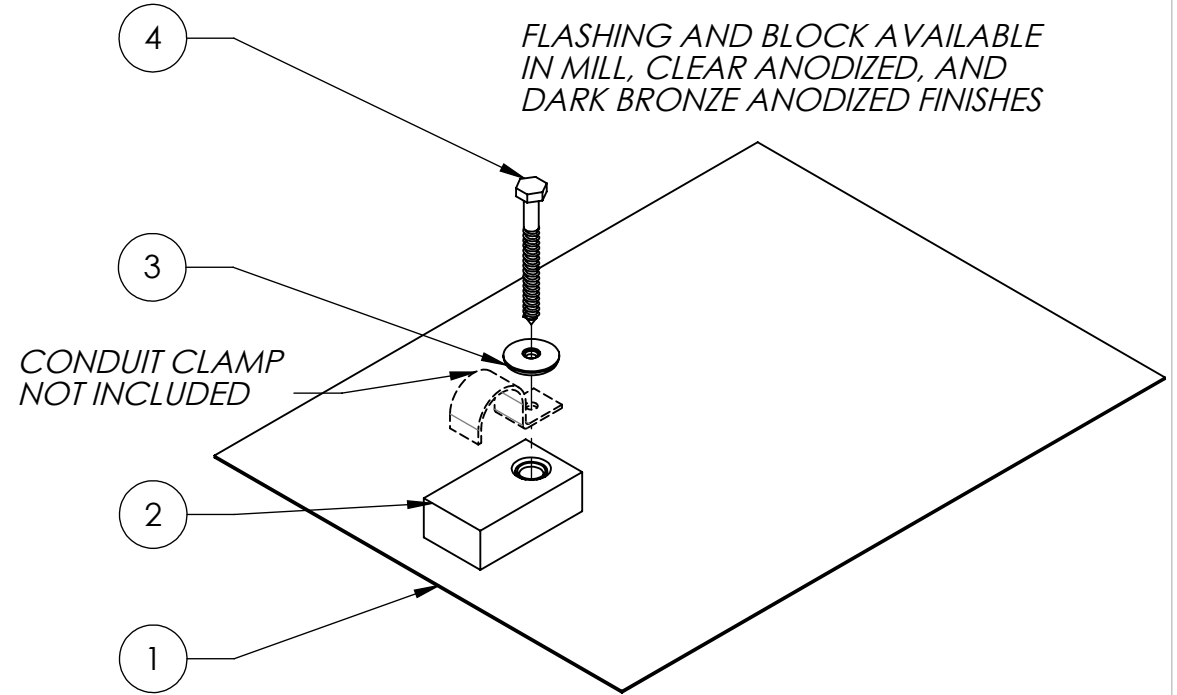


ITEM NO.	DESCRIPTION	QTY.
1	FLASHING, 9" X 12" X .040", 5052, MILL	1
2	QBLOCK, CONDUIT, 5/16" - 6061-T6, MILL	1
3	WASHER, SEALING, 1/4" ID X 7/8" OD, EPDM BONDED SS	1
4	LAG SCREW, HEX HEAD, 1/4" x 2-1/2", 18-8SS	1



Quick Mount PV[®]

TITLE:
QMCC: CLASSIC CONDUIT MOUNT

UNLESS OTHERWISE SPECIFIED:		SIZE	DRAWN BY: MPW	REV	
DIMENSIONS ARE IN INCHES		A	DATE: 7/19/2012	3	
TOLERANCES:			SCALE: 1:4		WEIGHT: 0.65
FRACTIONAL ± 1/16			SHEET 1 OF 1		
TWO PLACE DECIMAL ±.02					
THREE PLACE DECIMAL ±.005					

PROPRIETARY AND CONFIDENTIAL
THE INFORMATION CONTAINED IN THIS DRAWING IS THE SOLE PROPERTY OF QUICK MOUNT PV. ANY REPRODUCTION IN PART OR AS A WHOLE WITHOUT THE WRITTEN PERMISSION OF QUICK MOUNT PV IS PROHIBITED.

DO NOT SCALE DRAWING