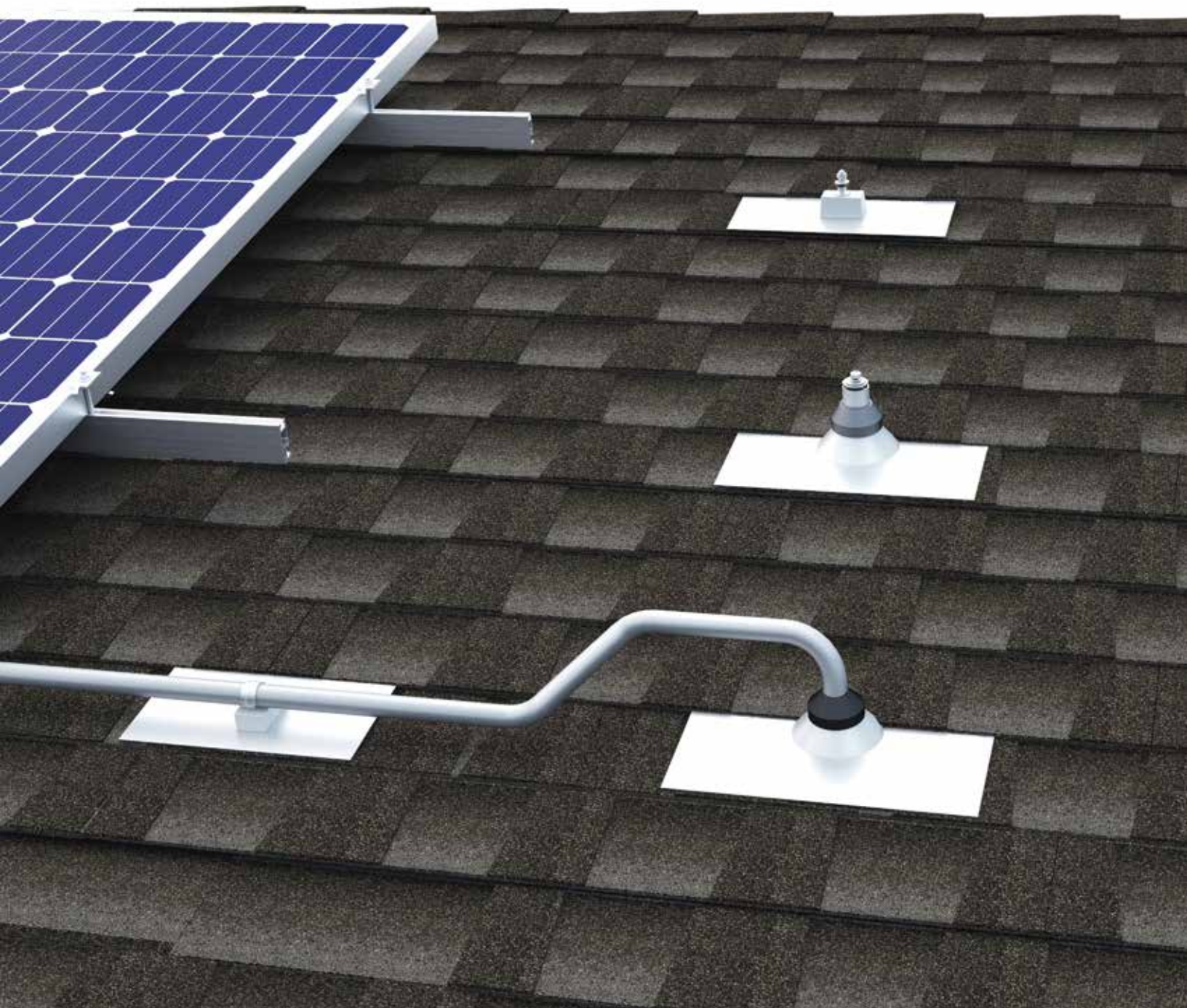
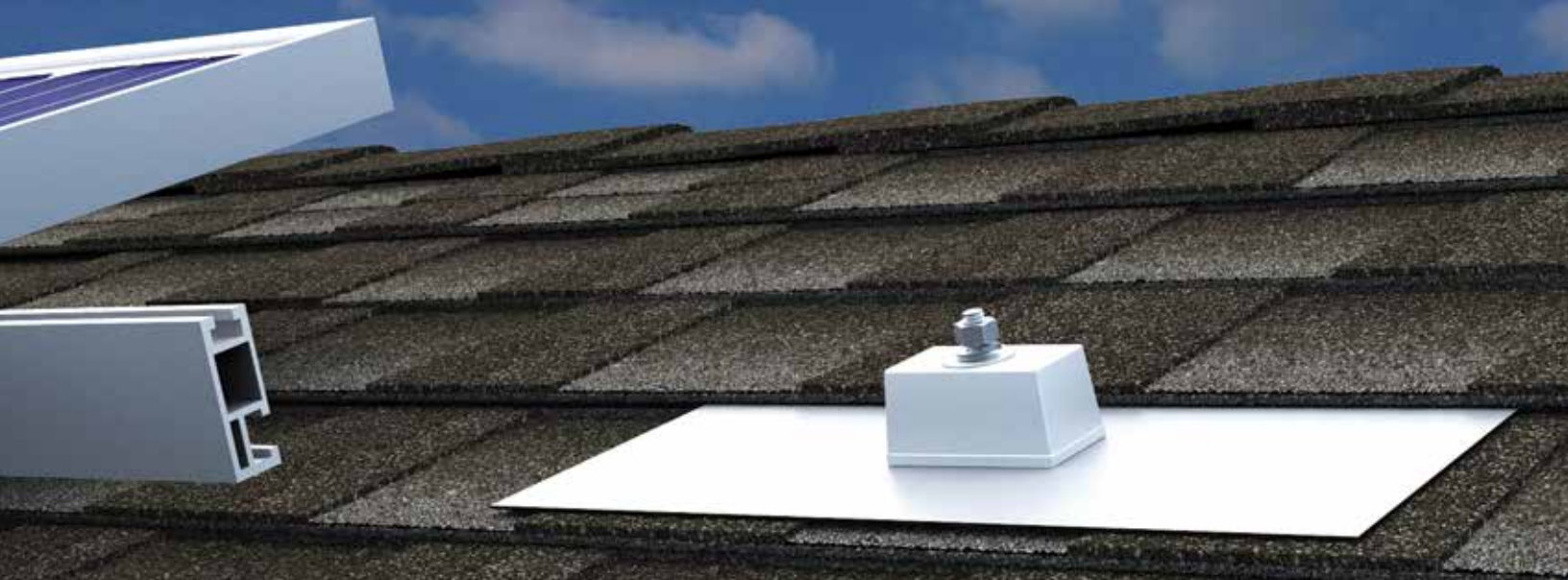




Solar Mounting Solutions Composition/Asphalt Shingle Roofs





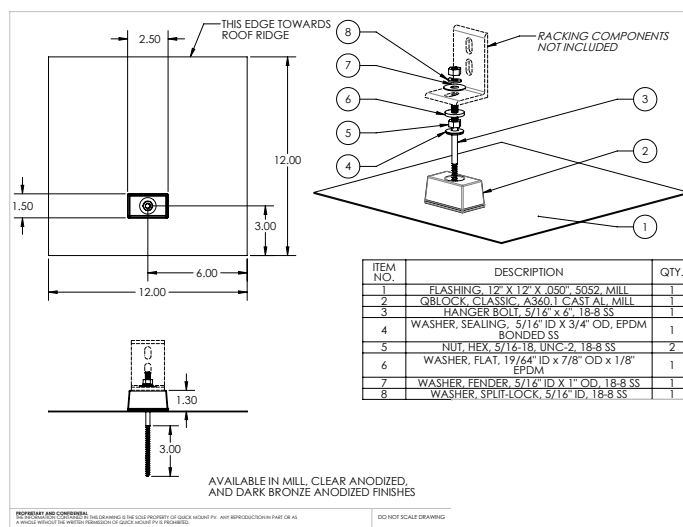
Classic Composition Mount

The Classic Comp, the industry's best-selling solar mount for rooftop installations of PV and solar water heating systems, uses our patented QBlock Elevated Water Seal technology to ensure a long, watertight life on composition/asphalt shingle roofs. It was also designed to install fast, with just a single bolt. It is backed by solid engineering and certified for strength and waterproofing by the ICC-ES (ICC-ESR-2835). This mount is the most universally code-compliant mount available for composition/asphalt shingle roofs.

FEATURES

- One bolt installation
- No shingle cutting
- Approved for use by leading roof manufacturers
- Uses our patented QBlock Elevated Water Seal technology
- Won't void roof manufacturer's warranty
- 100% IBC compliant
- Meets or exceeds all roofing industry best practices
- Works with all leading racks
- Made in the USA

Available finishes: aluminum mill (A), bronze anodized (B), clear anodized (C)



www.quickmountpv.com/downloads/cad/qmpv-composition-mount.pdf

Please visit our website for full-sized CAD drawings, instructions and complete product specifications.

Classic Composition Mount Engineering Test Results				
Test Setup	Average values based on failure tests results in Douglas Fir		Average values based on failure tests results in Cedar	
	Ultimate Load Capacity [lbf]	Failure Mode	Ultimate Load Capacity [lbf]	Failure Mode
Pullout	2552	Lag Bolt Pulled Out	1357	Lag Bolt Pulled Out
Shear Parallel to Rafter	2203	Bent Lag Bolt	1957	Bent Lag Bolt



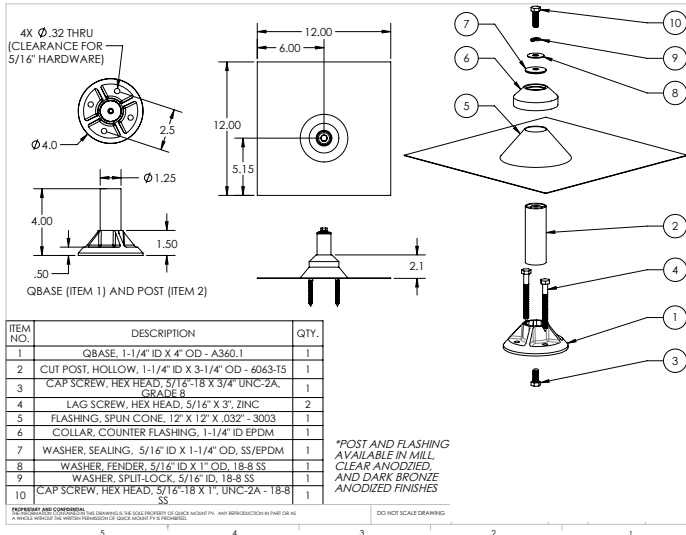
QBase Composition Mount

The QBase Composition Mount is the strongest and most cost-effective method for installing solar during the construction of a new composition/asphalt shingle roof for either a new home or a roof replacement. The base-and-post mount is specifically designed to fit into the workflow between the trades to make solar installation smooth and efficient.



FEATURES

- Cone flashing is spun aluminum with no welds or seams to rust or rot
- 3-step process aids collaboration between roofers and PV installers
- Great mount for solar hot water
- QBase is the strongest off-the-shelf mechanical mount
- All fasteners and hardware included
- All exposed hardware is 18-8 stainless steel
- Attaches to roof structure with 2 or 4 fasteners
- 100% IBC compliant
- Meets or exceeds all roofing industry best practices
- Works with all leading racks
- Patents pending
- Made in the USA



<http://www.quickmountpv.com/downloads/cad/qmpv-qbase-comp-mount.pdf>

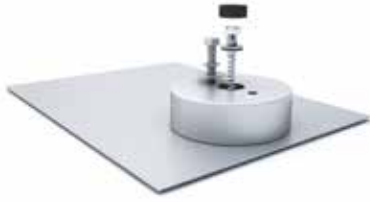
Please visit our [website](#) for full-sized CAD drawings, instructions and complete product specifications.

Available finishes: aluminum mill (A), bronze anodized (B), clear anodized (C)

QBase Composition Mount Engineering Test Results

Test Setup	Average values based on failure tests results in Douglas Fir			
	Ultimate Load Capacity [lbf]	Rafter moisture content (%)	Rafter specific gravity	Failure Mode
Pullout	3031	20.9	0.436	Lag Bolt Pulled Out
Shear Parallel to Rafter	1972	17.4	0.417	Lag Bolt Pulled Out
Shear Perpendicular to Rafter	1466	17.2	0.494	Plywood buckled/Lag Bolt Pulled Out

Specialty Composition Mounts



QUICK GROOVE™ COMP MOUNT

The Quick Groove Comp Mount brings Quick Mount PV's superior waterproofing technology and universal code-compliance to installations of Zep-compatible modules on composition/asphalt shingle roofs. The Quick Groove Comp Mount – equivalent to Zep Solar's "Comp Mount, Type A" – utilizes a 9" x 12" all-aluminum flashing and our patented Elevated Water Seal technology to provide unmatched waterproofing and strength.



CLASSIC CONDUIT MOUNT

Our Classic Conduit Mount lifts conduit off the roof to protect wiring from overheating. These mounts use our Elevated Water Seal technology to seal the roof penetrations and we use aluminum and stainless steel parts to secure the conduit for the life of the system. Available for composition/asphalt shingle and wood shake roofs.



CONDUIT PENETRATION FLASHING

Quick Mount PV's Conduit Penetration Flashing provides a quick, easy way to install a variety of conduit sizes through the roof while protecting the penetration against water intrusion. The Conduit Penetration Flashing is comprised of an all-aluminum flashing and an innovative EPDM post collar that can be customized by the installer to fit a 1/2", 3/4", or 1" diameter conduit.



CLASSIC POOL PANEL MOUNT

Designed to work with all strap-down pools, our flashed Classic Pool Panel Mount seals out the rain and secures the solar collector to the roof. Anchor the waterproof mounts to the roof on either side of the collector and use flat rope straps (not included) to hold it securely in the wind.



(925) 478-8269 ■ sales@quickmountpv.com
2700 Mitchell Dr., Bldg 2 ■ Walnut Creek, CA 94598
www.quickmountpv.com

