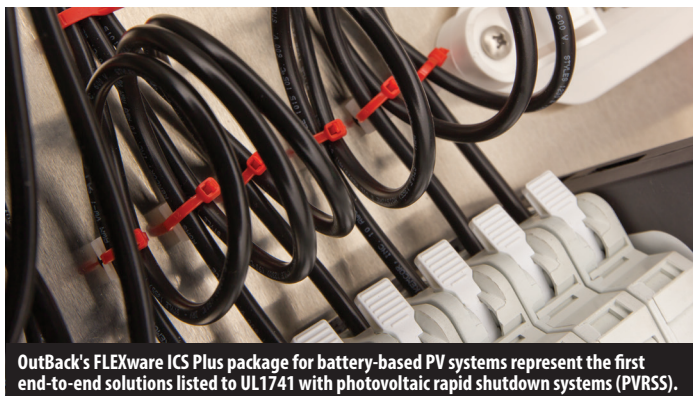
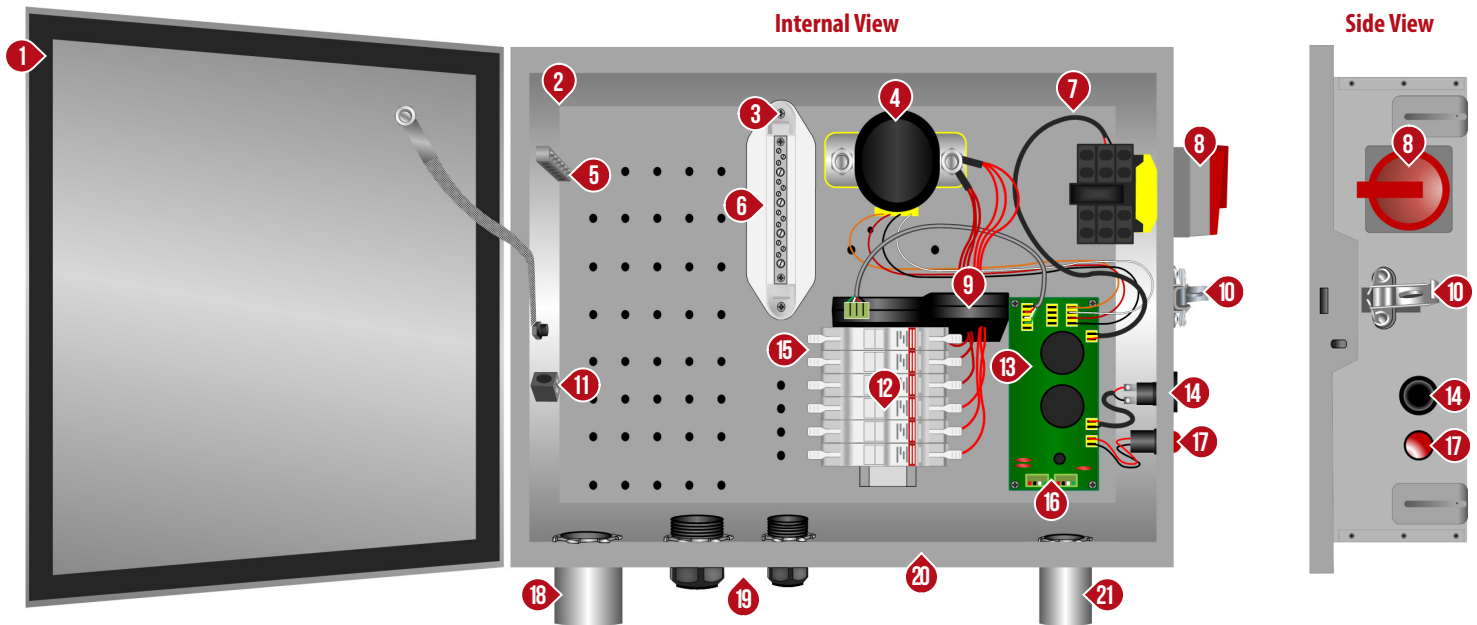


FLEXware ICS Plus Combiner Box

Features and Specifications of the OutBack FWPV6-FH600-SDA



OutBack's FLEXware ICS Plus package for battery-based PV systems represent the first end-to-end solutions listed to UL1741 with photovoltaic rapid shutdown systems (PVRSS).

FLEXware ICS Plus Combiner Box Features

- 1 Type 3R Enclosure with Gasketed Lid
- 2 Removable Component Panel
- 3 Negative Terminal Bus Bar
- 4 Main PV Contactor
- 5 Ground Terminal Bus Bar
- 6 PV Grounded Connections
- 7 Internal Pre-Wiring
- 8 PV Combiner Disconnect
- 9 Arc Fault Detection Device
- 10 Security Latch
- 11 Ground Cable Terminal
- 12 Fuse Holders
- 13 Combiner Control Board
- 14 Arc Fault Self-Test Button
- 15 PV Ungrounded Connections
- 16 RSI Communications
- 17 Arc Fault Annunciator
- 18 PV Output Conduit
- 19 PV Cable Glands
- 20 Surge Protection Device Knockout
- 21 RSI Communications and Power Knockout

Specifications FWPV6-FH600-SDA

Specifications	FWPV6-FH600-SDA
Description	FLEXware ICS Plus DC combiner box with PV rapid shutdown, AFCI and disconnecting means compatible with up to 6 PV strings, opens up controlled conductors within 10ft of PV array
Enclosure	Material: Powder-coated aluminum Rating: Outdoor rainproof, UL type 3R Security: Lockable
Mounting Options	Vertical to horizontal, external feet provided for mounting
Number of String Inputs	6
Total Maximum Current	96A
Voltage Rating	600VDC
Terminals	Output: 14 - 2/0 Input: Cable glands #14 to 8 AWG (2.08 to 8.4mm ²)
Operating Temperature	-25 to 60°C
Overcurrent Protection	Includes (6) 600VDC DIN rail fuse holders (fuses sold separately)
Switch	Can be locked in off position
Accessories	FUSE-15-600VDC: 10 Box of (10) x 15A fuses FUSE-20-600VDC: 10 Box of (10) x 15A fuses FH-30-1000VDC-DIN: 30A, 1000VDC fuse holder
Dimensions H x W x D (in/cm)	15.5 x 19.5 x 4.5 / 39.4 x 49.5 x 11.4
Weight (lb/kg)	~12 / 5.4
Certifications	UL1741 with photovoltaic rapid shutdown systems, UL1699B, CSA22.2, NEC690, FCC Class B