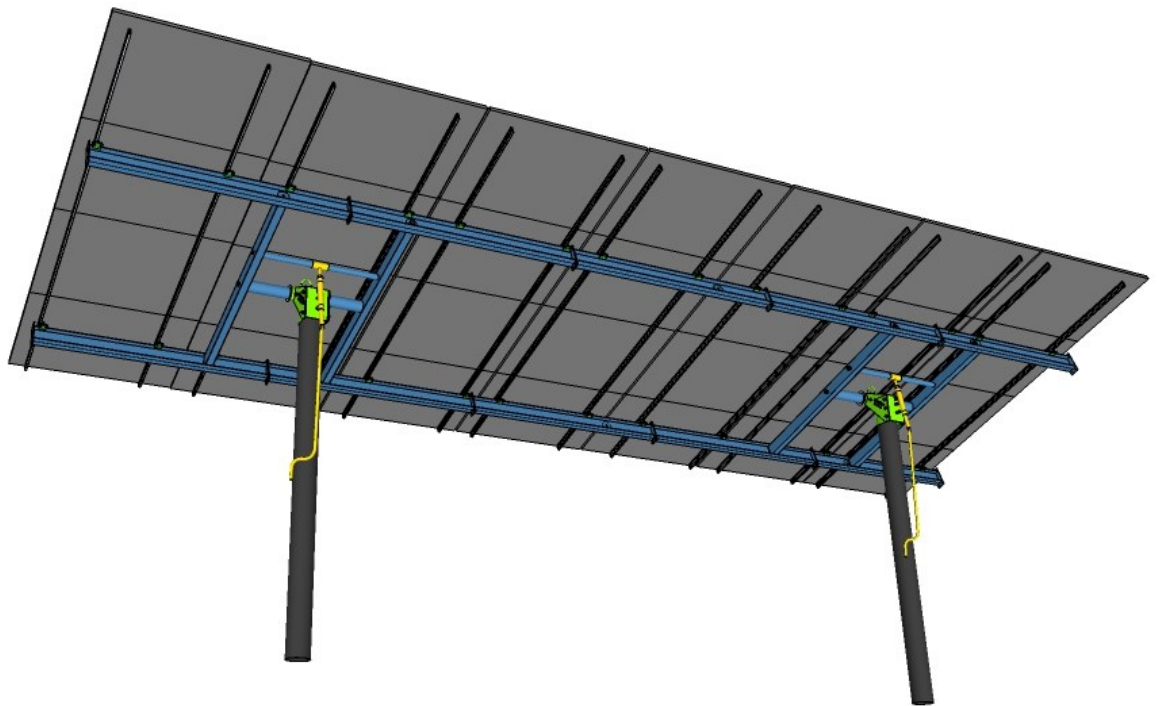




Multi-Pole Addendum

To the 8" Series Top of Pole Mount



www.mtsolar.us
844-MT-SOLAR (687-6527)

MPM Installation Guide Addendum



201



202



203 A

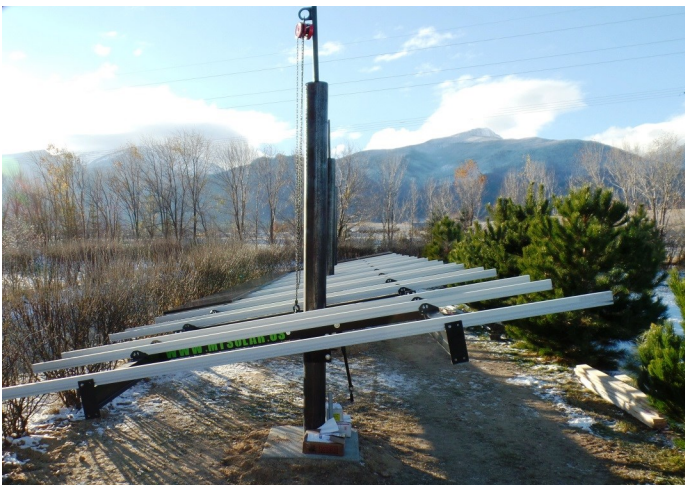
201: Install 8" Pipes with appropriate spacing, along an E/W line.

202: Follow steps 101—113 in the 8" Series Installation Guide to install steel framework on each pole.

203: Using 1/2" x 1 1/4" bolts and 1/2" nuts and split washers, splice I-beams together with additional I-beam sections and (if applicable) splice wings on the ends of the Beam sections.



203 B



204

204: Follow steps 116—119 in the 8" Series Installation Guide to install rails and solar modules. Plan the layout of your rails according to your solar module configuration. Leave out the necessary modules to allow for the 8" pipe.



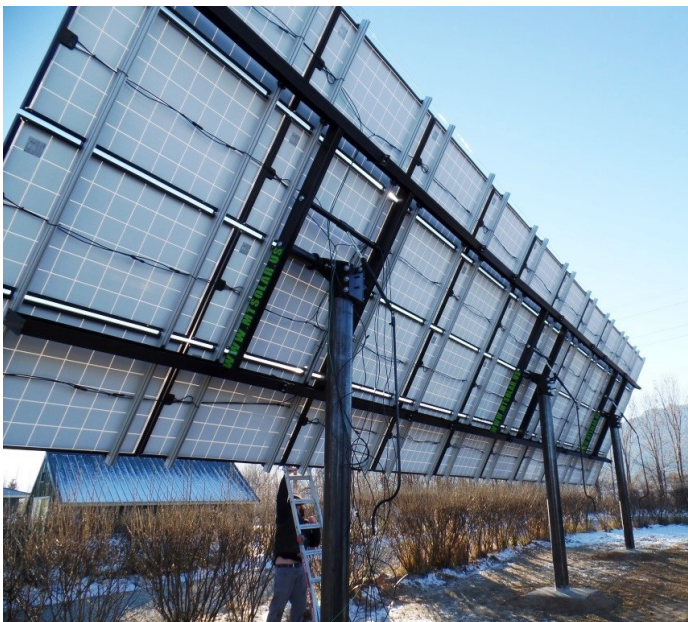
205



206

205: Raise and or tilt the array to facilitate module installation and/or module wiring and wire management as needed.

206: Raise the array to the top of the poles and follow steps 122—125 in the 8" Series Installation Guide to complete the installation.



844-MT-SOLAR (687-6527)

sales@mtsolar.us

www.mtsolar.us

54179 Herak Road

Charlo, MT 59824

