

# Our E-Panel Saves Money And Allows Room For Your Classics!



- ❑ **Small size compared to existing disconnect and over current solutions**
- ❑ **Pre-wired to save time, money and complexity. All field wiring connections clearly labeled**
- ❑ **White powder coated aluminum or standard gray powder coated steel**
- ❑ **Easily expands to accommodate additional inverters**
- ❑ **Six slots for din rail breakers, PV, Wind, Hydro, AC distribution**
- ❑ **500 amp 50mv shunt for battery status monitor systems**
- ❑ **Pre-wired 50 amp 240 VAC inverter AC bypass switch**
- ❑ **Pre-wired 50 amp 240 VAC AC input disconnect**
- ❑ **Bus bars for Battery Plus, Battery Minus and ground**
- ❑ **Mounting hardware for inverter and charge controller**
- ❑ **Snap in plastic conduit for AC, Mate and RTS wires**
- ❑ **Mounting brackets for hanging E-Panel on wall**
- ❑ **Heavy duty 175 amp AC distribution block**
- ❑ **ETL listed to UL and Canadian standards**
- ❑ **Right hand hinged door to mount inverter\***
- ❑ **Knock outs for AC and DC conduits**
- ❑ **Charge control bracket (CCB)**
- ❑ **Cut outs for two GFCI outlets**
- ❑ **DC inverter battery breaker**
- ❑ **Internal inverter cables**



14000 Burn RD.  
Arlington, WA 98223  
USA  
425-374-9060  
Fax 360-691-6862  
info@midnitesolar.com  
www.midnitesolar.com

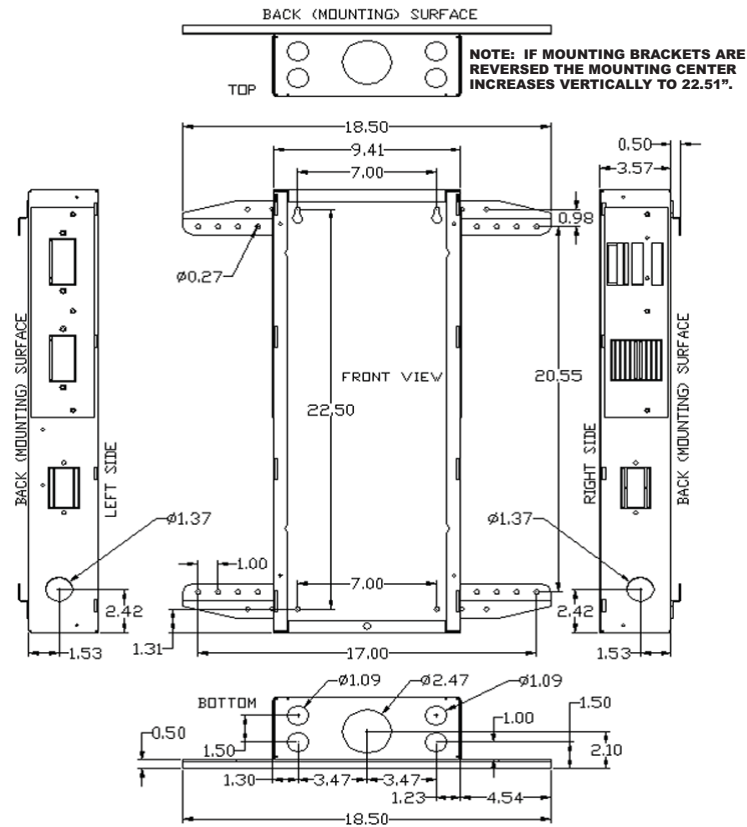


# Midnite Solar E-Panel (OutBack Version)



**FINISHED ASSEMBLY**

**Inverter installation has just gone from hours to minutes!**



**MODEL NUMBER CODE:**

MNE.....175.....ST or AL  
 Midnite E-Panel DC Inverter breaker Steel or Aluminum

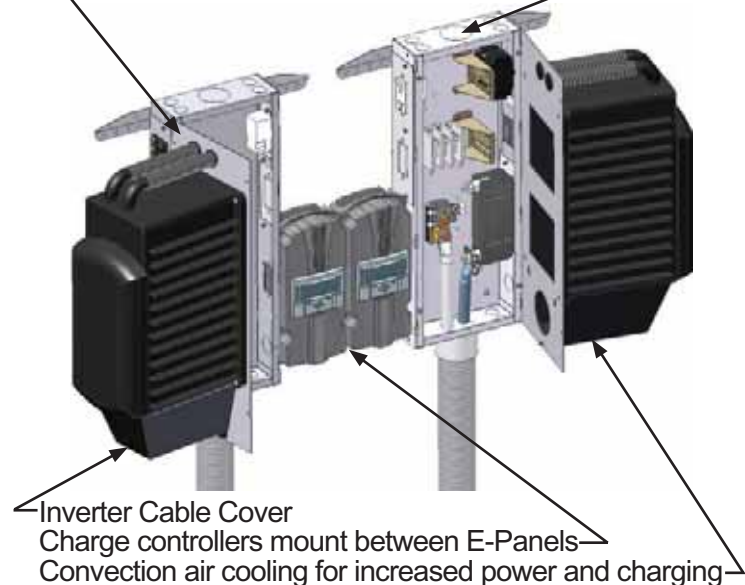
Model No.	INVERTERS	PRICE
MNE125ST	FX3048T, GTFX3048, FX2532MT, FX2348ET	\$ 439
MNE175ST	FX2524T, VFX3648, FX2524MT, VFX3232M, FX2024ET, VFX3048E	\$ 479
MNE250ST	FX2012T, VFX2812, VFX3524, GVFX3524, FX2012MT, VFX2012ET, VFX2612E, VFX3024E, FX2012MT, VFX2812M	\$ 479
MNE125AL	FX3048T, GTFX3048, FX2532MT, FX2348ET	\$ 479
MNE175AL	FX2524T, VFX3648, FX2524MT, VFX3232M, FX2024ET, VFX3048E	\$ 519
MNE250AL	FX2012T, VFX2812, VFX3524, GVFX3524, FX2012MT, VFX2012ET, VFX2612E, VFX3024E, FX2012MT, VFX2812M	\$ 519

- OPTIONS:**
- MNEleftdoorST - Left hand hinge steel door w/right hand CCB \$ 59
  - MNEleftdoorAL - Left hand hinge aluminum door w/right hand CCB \$ 65
  - MNEPV63 - 63 amp 125VDC din rail mount breaker \$ 15
  - MNDC-GFP - 63 amp DC GFP breaker assembly with 1/2amp trip \$ 65

See [www.outbackpower.com](http://www.outbackpower.com) for additional din rail mount breakers (OBAC & OBPV)  
 Prices do not include the OutBack Inverter.

See [www.midnitesolar.com](http://www.midnitesolar.com) for the evolution of the E-Panel  
 ETL tested an open E-Panel door with 360 pounds installed

**Stacking horizontal or vertical is easy**  
 Knock outs align top and bottom for vertical stacking  
 left hand door required for horizontal stacking



Inverter Cable Cover  
 Charge controllers mount between E-Panels  
 Convection air cooling for increased power and charging



14000 Burn Road  
 ARLINGTON, WA 98223 USA  
 PHONE: 425-374-9060 FAX: 360-691-6862  
[www.midnitesolar.com](http://www.midnitesolar.com)

Support your local Installer

