

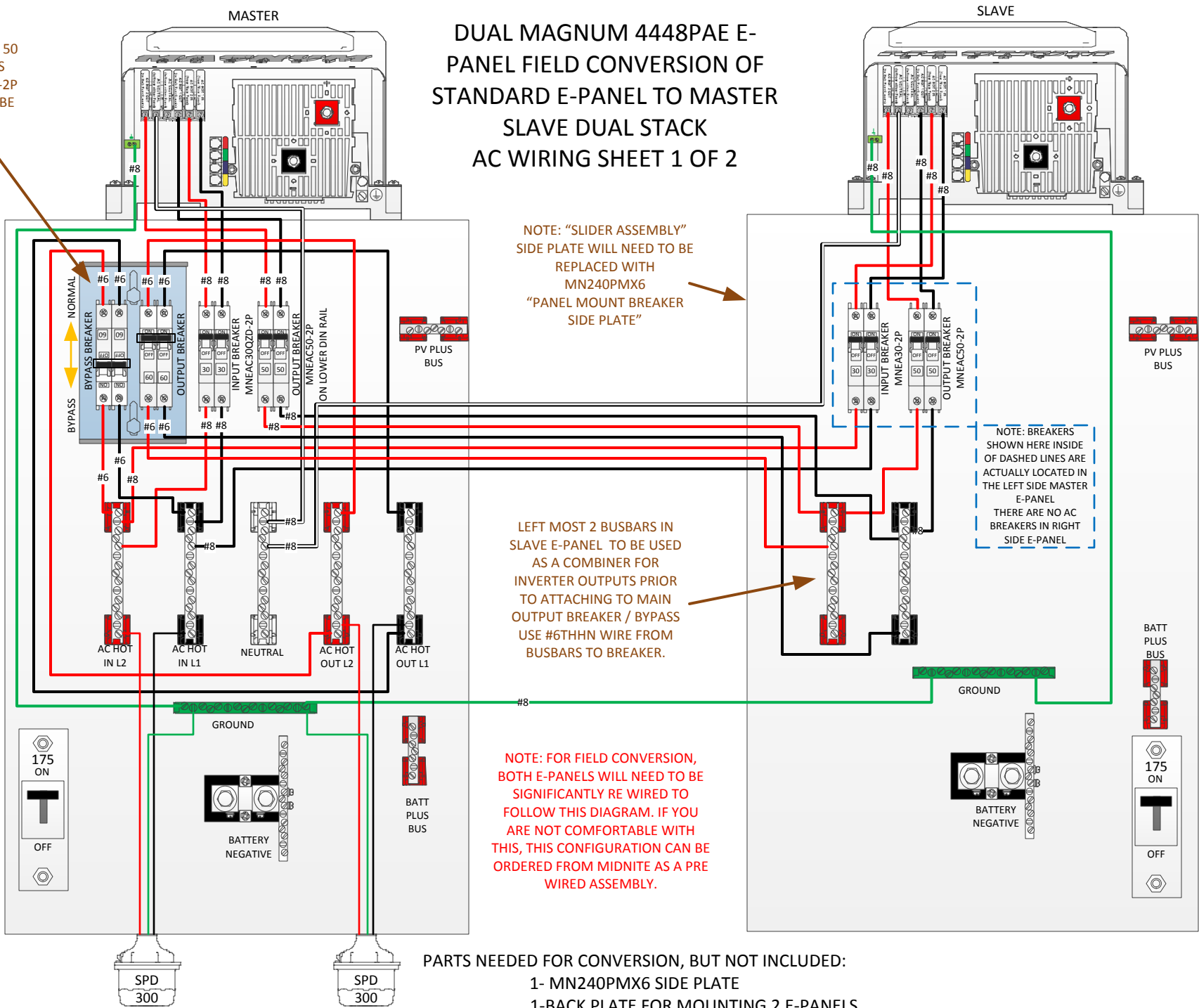
BYPASS BREAKERS CAN BE 50 OR 60 AMP. IF 60 AMP IS DESIRED, 2 MNEAC60QZD-2P BREAKERS WILL NEED TO BE ORDERED

NOTE:
IF "QZD" STYLE GREY BREAKERS FROM SLAVE E-PANEL ARE USED ON THE MASTER E-PANEL, THERE WILL BE A SMALL GAP VISIBLE AT THE TOP AND BOTTOM OF THE BREAKER. IF THIS IS NOT ACCEPTABLE, ORDER P/N# MNEAC30-2P AND MNEAC50-2P WHICH WILL FIT SNUGLY IN THE OPENING IN THE COVER.

AS SHIPPED, BYPASS BREAKER ASSEMBLY CONSISTS OF 2 MNEAC50QZD-2P BREAKERS

ALL WIRING TO BE # 8 AWG THHN UNLESS MARKED DIFFERENTLY

DUAL MAGNUM 4448PAE E-PANEL FIELD CONVERSION OF STANDARD E-PANEL TO MASTER SLAVE DUAL STACK AC WIRING SHEET 1 OF 2



NOTE: "SLIDER ASSEMBLY" SIDE PLATE WILL NEED TO BE REPLACED WITH MN240PMX6 "PANEL MOUNT BREAKER SIDE PLATE"

LEFT MOST 2 BUSBARS IN SLAVE E-PANEL TO BE USED AS A COMBINER FOR INVERTER OUTPUTS PRIOR TO ATTACHING TO MAIN OUTPUT BREAKER / BYPASS USE #6THHN WIRE FROM BUSBARS TO BREAKER.

NOTE: BREAKERS SHOWN HERE INSIDE OF DASHED LINES ARE ACTUALLY LOCATED IN THE LEFT SIDE MASTER E-PANEL THERE ARE NO AC BREAKERS IN RIGHT SIDE E-PANEL

NOTE: FOR FIELD CONVERSION, BOTH E-PANELS WILL NEED TO BE SIGNIFICANTLY RE WIRED TO FOLLOW THIS DIAGRAM. IF YOU ARE NOT COMFORTABLE WITH THIS, THIS CONFIGURATION CAN BE ORDERED FROM MIDNITE AS A PRE WIRED ASSEMBLY.

- PARTS NEEDED FOR CONVERSION, BUT NOT INCLUDED:
- 1- MN240PMX6 SIDE PLATE
 - 1-BACK PLATE FOR MOUNTING 2 E-PANELS
 - 2- MNEACQZD60-2P BREAKERS FOR BYPASS IF INCLUDED QZD50 BREAKERS ARE NOT ADEQUATE



DRAWN BY T.CARPENTER W/12/24