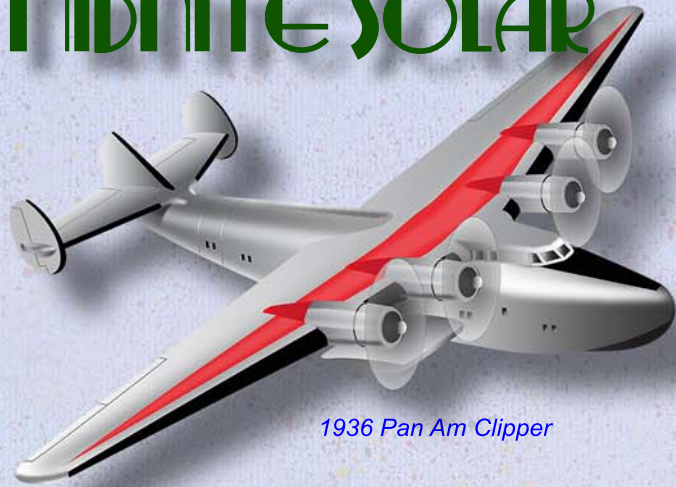


MIDNITE SOLAR



1936 Pan Am Clipper

The Clipper & Classic

Clipper

The MidNite Clipper was designed to work in conjunction with the Classic MPPT Controller to give you safe reliable control of your wind turbine while also giving you true three stage charging of your batteries. The combination of the Clipper and the Classic has been proven to increase daily harvest up to 250% as well as peak power by 300% on some turbines.

- Three stage charging
- Reduces wear & tear on turbine
- Reduces noise from turbine
controllable noise level
- AC and DC models from 1500 to
4000 watts

Classic MPPT Charge Controller

The Classic substantially increases the flexibility, features and range currently found on MPPT controllers. It is also now the standard wind controller supplied by many US, Canadian and African wind turbine companies.



MidNite
Clipper

Classic MPPT
Charge Controller

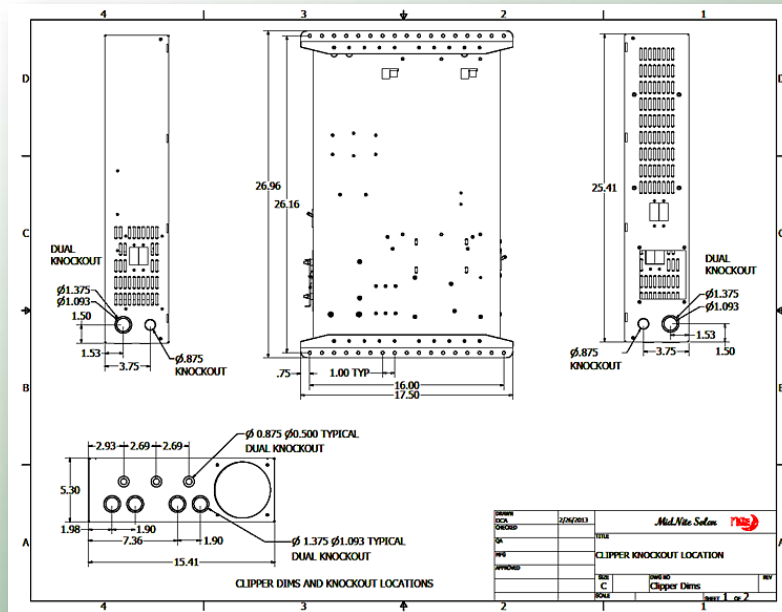


www.midnitesolar.com

17722 - 67th Ave NE, Arlington, WA 98223 ph. 360.403.7207 fax 360.691.6862

AC & DC Clippers

Clipper Dimensional Drawing



MidNite Solar Clipper Specifications

	MNCLIP1.5KAC	MNCLIP4.0KAC	MNCLIP1.5KDC	MNCLIP4.0KDC
Enclosure rating	Indoor	Indoor	Indoor	Indoor
Enclosure material	Powder coated steel	Powder coated steel	Powder coated steel	Powder coated steel
Maximum & Continuous Wattage	2,000 Maximum and 1,500 Continuous Watts	5,000 Maximum and 4,000 Continuous Watts	2,000 Maximum and 1,500 Continuous Watts	5,000 Maximum and 4,000 Continuous Watts
Input	3 Phase AC	3 Phase AC	DC	DC
Output	250 Volts DC Maximum	250 Volts DC Maximum	250 Volts DC Maximum	250 Volts DC Maximum
Stop Switch included	YES	YES	YES	YES
Wire Range For Input	6 to 2/0 AWG (1.63 to 9.27mm)	6 to 2/0 AWG (1.63 to 9.27mm)	6 to 2/0 AWG (1.63 to 9.27mm)	6 to 2/0 AWG (1.63 to 9.27mm)
Wire range for output	14 to 6 AWG (1.63 to 4.11mm)	14 to 6 AWG (1.63 to 4.11mm)	14 to 6 AWG (1.63 to 4.11mm)	14 to 6 AWG (1.63 to 4.11mm)
Self Powered from Turbine	YES	YES	YES	YES
Stop Switch Amperage	60 Amps	60 Amps	50 Amps	50 Amps
Communicates with Classic	YES	YES	YES	YES
Standard Resistance Values Available	0.8 and 2.0 ohms per phase	0.4, 1.0, 1.6 and 4.0 Ohms per phase	0.7, 2.4 and 6 Ohms	0.5, 1.2, 1.3, 3.0, 4.8 and 12 Ohms
Classic & Required Breaker Can Be Mounted to the Clipper	Requires MNCCB-L charge controller bracket and breakers. (Not Included)	Requires MNCCB-L charge controller bracket and breakers. (Not Included)	Requires MNCCB-L charge controller bracket and breakers. (Not Included)	Requires MNCCB-L charge controller bracket and breakers. (Not Included)
SPD Ready	YES	YES	YES	YES
Listing	NONE	NONE	NONE	NONE