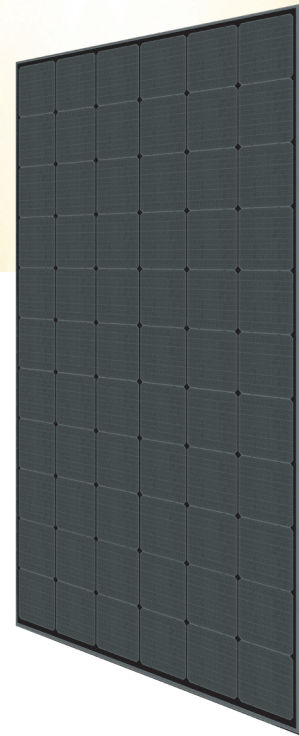




Preliminary Technical
Information Sheet



HiDM-Black

ALL-BLACK HIGH DENSITY MONO PERC MODULE

320 W ~ 335 W

CS1H-320 | 325 | 330 | 335MS

MORE POWER



Maximize the light absorption area,
module efficiency up to 19.86 %



Low NMOT: 43 ± 3 °C
Low temperature coefficient (Pmax):
-0.37 % / °C



Better shading tolerance



linear power output warranty



product warranty on materials
and workmanship

MANAGEMENT SYSTEM CERTIFICATES*

ISO 9001:2015 / Quality management system

ISO 14001:2015 / Standards for environmental management system

OHSAS 18001:2007 / International standards for occupational health & safety

PRODUCT CERTIFICATES*

IEC 61215 / IEC 61730: VDE / CE / CEC AU

UL 1703 / IEC 61215 performance: CEC listed (US) / FSEC (US Florida)

UL 1703: CSA / IEC61701 ED2: VDE / IEC62716: VDE

Take-e-way



* We can provide this product with special BOM specifically certified with salt mist, and ammonia tests. Please talk to our local technical sales representatives to get your customized solutions.

CANADIAN SOLAR (USA) INC. is committed to providing high quality solar products, solar system solutions and services to customers around the world. As a leading PV project developer and manufacturer of solar modules with about 30 GW deployed around the world since 2001, Canadian Solar Inc. is one of the most bankable solar companies worldwide.

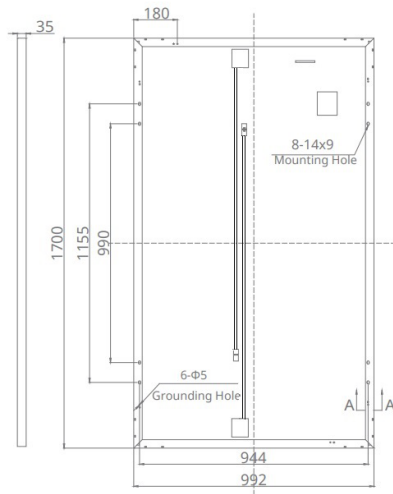
*For detail information, please refer to Installation Manual.

CANADIAN SOLAR (USA) INC.

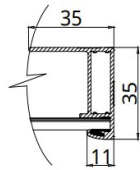
3000 Oak Road, Suite 400, Walnut Creek, CA 94597, USA | www.canadiansolar.com/na | sales.us@canadiansolar.com

ENGINEERING DRAWING (mm)

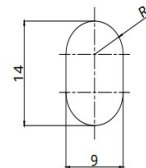
Rear View



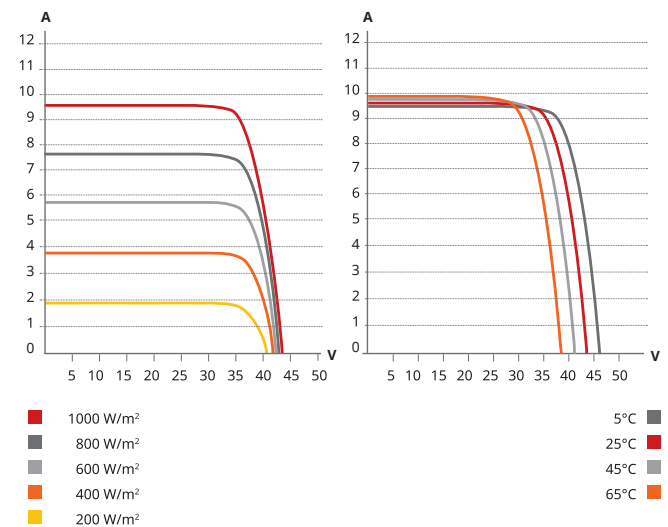
Frame Cross Section A-A



Mounting Hole



CS1H-330MS / I-V CURVES



ELECTRICAL DATA | STC*

CS1H	320MS	325MS	330MS	335MS
Nominal Max. Power (Pmax)	320 W	325 W	330 W	335 W
Opt. Operating Voltage (Vmp)	35.6 V	35.8 V	36.0 V	36.2 V
Opt. Operating Current (Imp)	9.00 A	9.09 A	9.18 A	9.27 A
Open Circuit Voltage (Voc)	43.3 V	43.4 V	43.5 V	43.6 V
Short Circuit Current (Isc)	9.51 A	9.58 A	9.65 A	9.73 A
Module Efficiency	18.98%	19.27%	19.57%	19.86%
Operating Temperature	-40°C ~ +85°C			
Max. System Voltage	1500V (IEC) or 1000V (IEC/UL)			
Module Fire Performance	TYPE 1 (UL 1703) or CLASS C (IEC 61730)			
Max. Series Fuse Rating	20 A			
Application Classification	Class A			
Power Tolerance	0 ~ + 5 W			

* Under Standard Test Conditions (STC) of irradiance of 1000 W/m², spectrum AM 1.5 and cell temperature of 25°C.

ELECTRICAL DATA | NMOT*

CS1H	320MS	325MS	330MS	335MS
Nominal Max. Power (Pmax)	238 W	242 W	245 W	249 W
Opt. Operating Voltage (Vmp)	32.5 V	32.7 V	32.8 V	33.0 V
Opt. Operating Current (Imp)	7.32 A	7.39 A	7.47 A	7.54 A
Open Circuit Voltage (Voc)	40.6 V	40.7 V	40.8 V	40.9 V
Short Circuit Current (Isc)	7.67 A	7.73 A	7.79 A	7.85 A

* Under Nominal Module Operating Temperature (NMOT), irradiance of 800 W/m², spectrum AM 1.5, ambient temperature 20°C, wind speed 1 m/s.

MECHANICAL DATA

Specification	Data
Cell Type	Mono-crystalline
Dimensions	1700 x 992 x 35 mm (66.9 x 39.1 x 1.38 in)
Weight	19.2 kg (42.3 lbs)
Front Cover	3.2 mm tempered glass
Frame	Anodized aluminium alloy
J-Box	IP67, 3 bypass diodes
Cable	4.0 mm ² (IEC), 12 AWG (UL)
Cable Length (Including Connector)	1350 mm (53.1 in)
Connector	T4 series
Per Pallet	30 pieces
Per Container (40' HQ)	780 pieces

TEMPERATURE CHARACTERISTICS

Specification	Data
Temperature Coefficient (Pmax)	-0.37 % / °C
Temperature Coefficient (Voc)	-0.29 % / °C
Temperature Coefficient (Isc)	0.05 % / °C
Nominal Module Operating Temperature	43±3 °C

PARTNER SECTION



The specifications and key features contained in this datasheet may deviate slightly from our actual products due to the on-going innovation and product enhancement. Canadian Solar Inc. reserves the right to make necessary adjustment to the information described herein at any time without further notice.

Please be kindly advised that PV modules should be handled and installed by qualified people who have professional skills and please carefully read the safety and installation instructions before using our PV modules.